

WEB VIDEO SERVER

Quick Manual

(Version Eng_1.0)

1. WEB VIDEO SERVER Preview

WEB VIDEO SERVER is the set top box type equipment, which transmits real-time digital video data through Internet network.

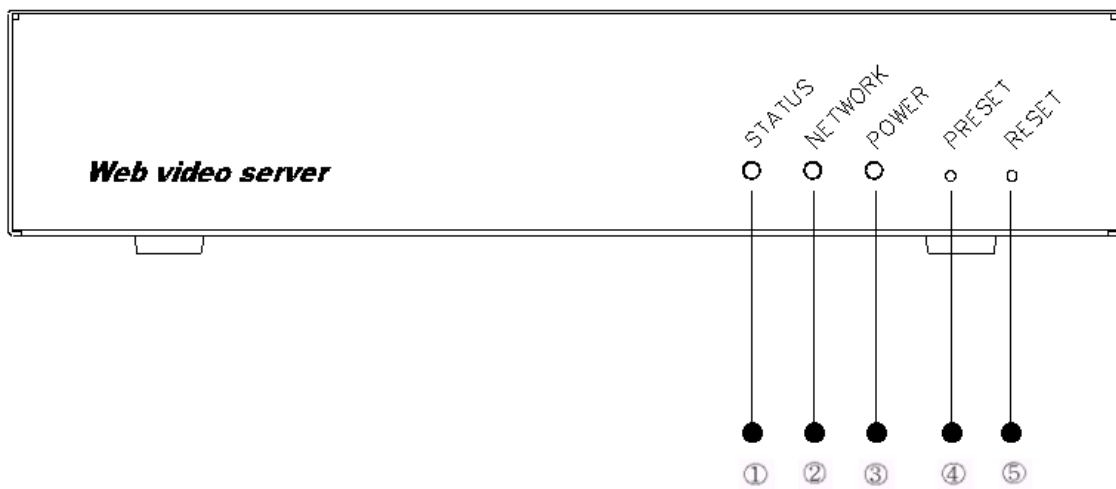
For operating WEB VIDEO SERVER, it' s unnecessary an additional equipment or program, just need power and network cable connecting. You can see the camera images through web browsers (MS Internet Explorer, Netscape) at anytime, in anywhere.



2. Component Names and Function

Familiarize yourself with the names and function of each part on the front and rear panels before installing WEB VIDEO SERVER.

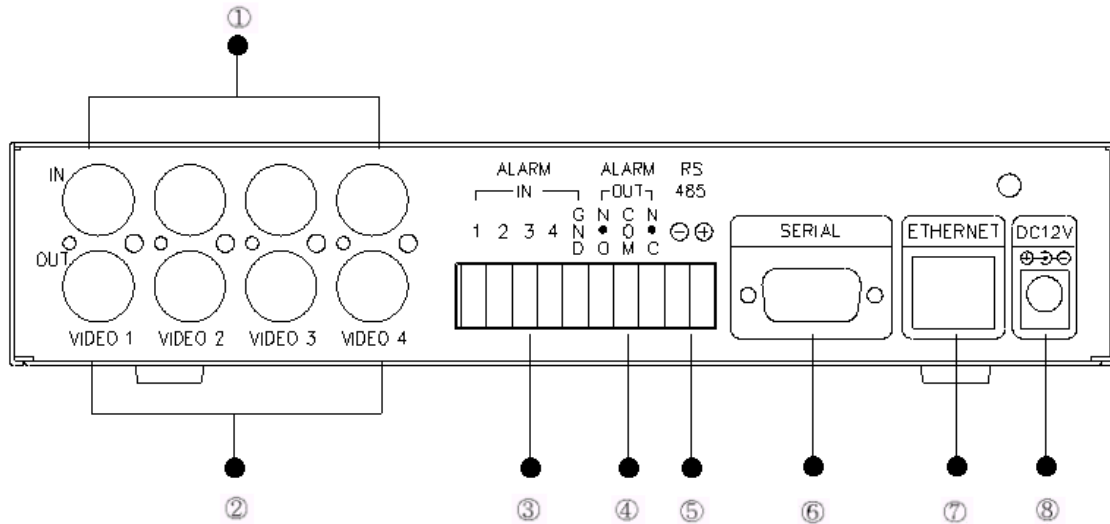
Front View of WEB VIDEO SERVER



Name	Function
① STATUS	Indicate connecting status of network cable. It is ON when LAN cable is connected normally.
② NETWORK	Flickering when transmitting and receiving data after connecting network normally.
③ POWER	Indicate power On / Off status.
④ PRESET	Used when setting figures need to be returned to the initial set-up environment of factory default. Used when forgot the password to access Administration or need to return all setting figures to the initial set-up environment.
⑤ RESET	Used when re-operating WEB VIDEO SERVER.



Rear View of WEB VIDEO SERVER



Name	Function
① VIDEO IN	Camera input connector.
② VIDEO OUT (Loop Through Out)	In case of supplying camera signal to outside equipment, possible to use by connecting to this terminal. When connecting, automatically 75Ω termination resistor off.
③ ALARM IN	It is the terminals which could input alarm sensors.
④ ALARM OUT	Possible to select N.O (Normal Open) / N.C (Normal Close) type.
⑤ RS-485	In order to control PTZ through web browser at remote place, connect WEB VIDEO SERVER to PTZ driver with RS-485 cable.
⑥ SERIAL	It is the serial port for external modem.
⑦ ETHERNET	It is the network connecting port for Ethernet (10Base-T/100Base-T).
⑧ DC-12V	Power input connector. It' s accepts 12V DC power source.



3. System Connections

- Power Connection

- Supply power to WEB VIDEO SERVER as DC-12V input terminal.

- Video Input Connection

- Connect camera to this input terminal in the rear side of WEB VIDEO SERVER.

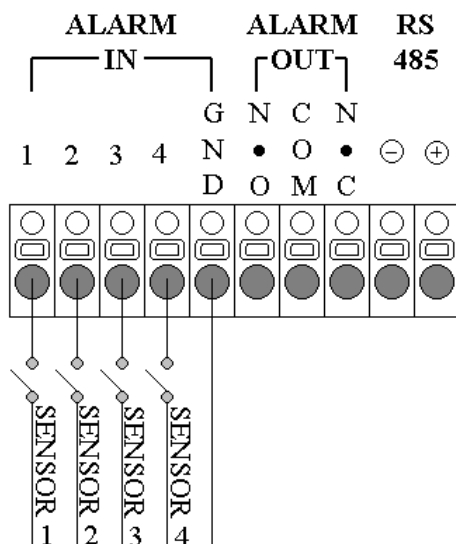
- Video Output Connection

- Connect monitor or any other CCTV equipment to this terminal in the rear side of WEB VIDEO SERVER.

- Network Connection

- To assign an IP first time, connect cross LAN cable which is provided with WEB VIDEO SERVER. After setting, please use normal direct LAN cable when install WEB VIDEO SERVER to the place where you want.

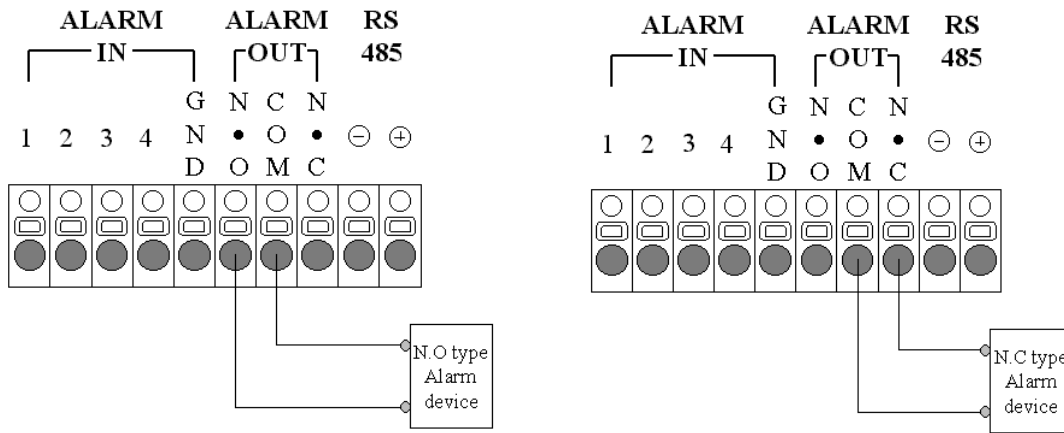
- Alarm Input Connection



Connect output power for connecting to sensor input terminal in rear-side according to allocated channel numbers. Connect one side of sensor to allocated numbers, the other side to contact terminals indicated “ GND “ .



• Alarm output connection

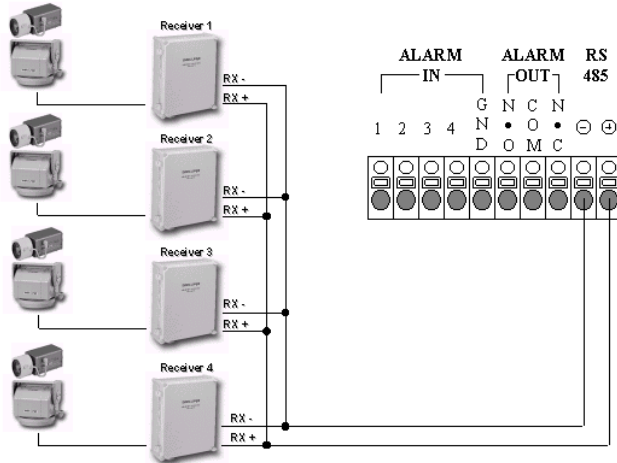


<N.O(Normal Open Type) Connection>

<N.C(Normal Close Type) Connection>

Connect alarm equipment to “ALARM OUT” terminal in rear-side of WEB VIDEO SERVER. Possible to use by selecting N.O (Normal Open) and N.C (Normal Close).

• RS-485 Connection



Connect the RS-485 input of the Receiver to RS-485 output in rear-side of WEB VIDEO SERVER.

When connecting, be careful of polarity. Connect “+” terminal in rear-side of WEB VIDEO SERVER to “+” terminal of receiver RS-485 Input, Connect “-” terminal of RS-485 output to “-” terminal of receiver RS-485 Input. In case

of connecting polarity in wrong way, remote control of Pan/Tilt/Zoom could not work.

• Serial Connection

In ISDN and PPP networks, the Serial port is used as the network port after connection with WEB VIDEO SERVER.

4. Setting IP Address

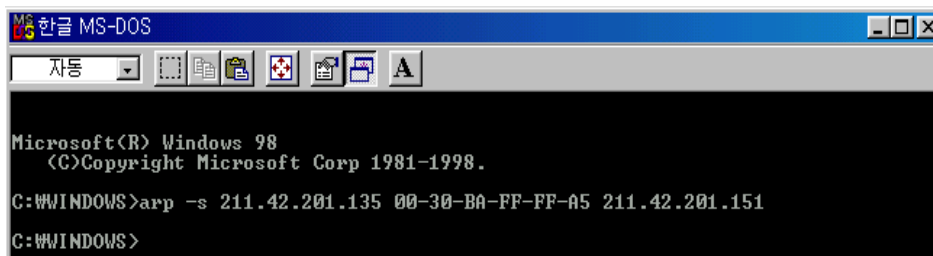
No information upon network set up except Ethernet (MAC address) in factory defaults. You must set up the IP address when installing.

• Before you begin

- To use WEB VIDEO SERVER under Network environment, Public IP address must be assigned to WEB VIDEO SERVER from a network manager. At this time, check the following network related information.
 - ✓ Gateway
 - ✓ Subnet mask
 - ✓ DNS
- MAC address is recorded on the bottom of WEB VIDEO SERVER at the time of purchase. Because it may be accidentally erased, please duplicate the number and keep it somewhere else. Check MAC address which is written in the bottom of WEB VIDEO SERVER. You must keep this number for IP address set-up.
- You must only use public IP address, when setting up IP address in Ethernet. If you use private IP address, it's available to connect them within intranet.
- Directly connect PC and WEB VIDEO SERVER using the cross LAN cable supplied and set up IP address and network condition.

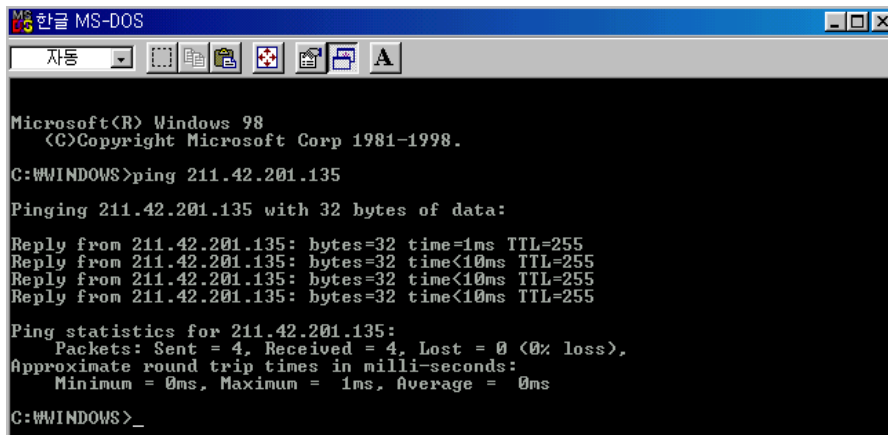
4-1. Setting IP by connecting to LAN Cable

1. Install the application program “ j2re-1_3_1-win-I” that is Java program in accessory CD.
2. Connect WEB VIDEO SERVER and network connected PC using the cross LAN cable supplied.
3. Open MS-DOS window from network-connected PC with WEB VIDEO SERVER.
4. Execute “ arp-s”
 - arp -s <WEB VIDEO SERVER IP Address> <WEB VIDEO SERVER MAC address> <PC IP address>
 - At this time, WEB VIDEO SERVER’ s IP and PC’ s IP of upper class must equal.
 - “ arp - s” command must execute instruction in 20 minutes after power supply.

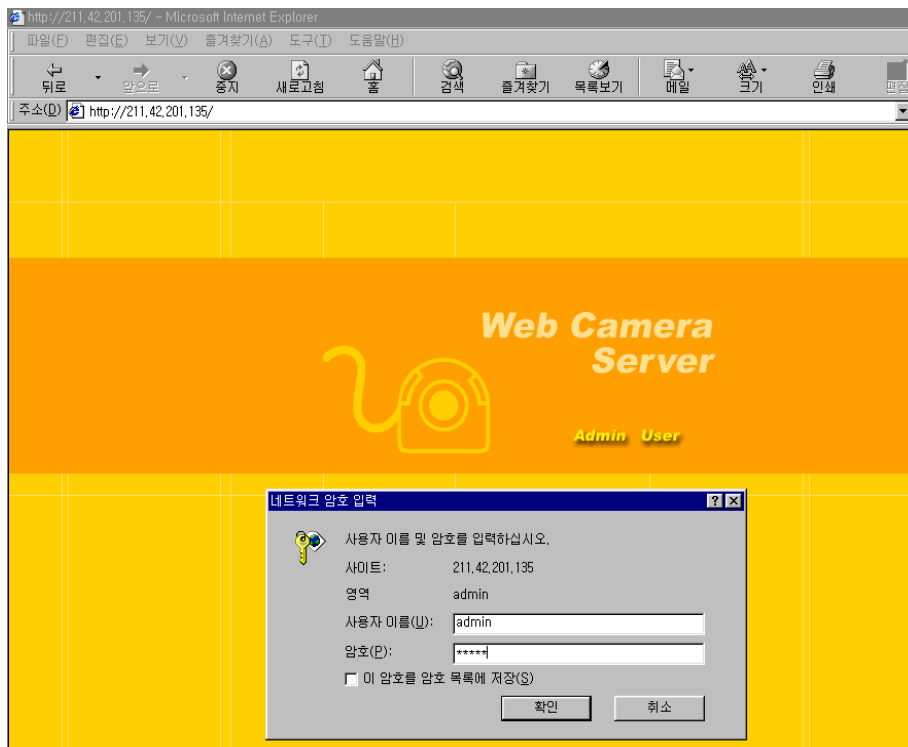


```
한글 MS-DOS
자동
Microsoft(R) Windows 98
(C)Copyright Microsoft Corp 1981-1998.
C:\WINDOWS>arp -s 211.42.201.135 00-30-B8-FF-FF-A5 211.42.201.151
C:\WINDOWS>
```

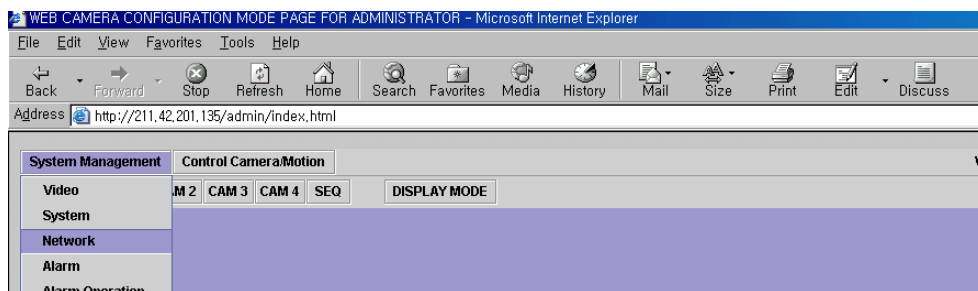
5. Execute “ ping”
 - ping <WEB VIDEO SERVER IP address>
 - If you getting no response, attempt 1 ~ 2 more times.
 - In case of no response of “ Ping” , “ Request times out” message will be shown.



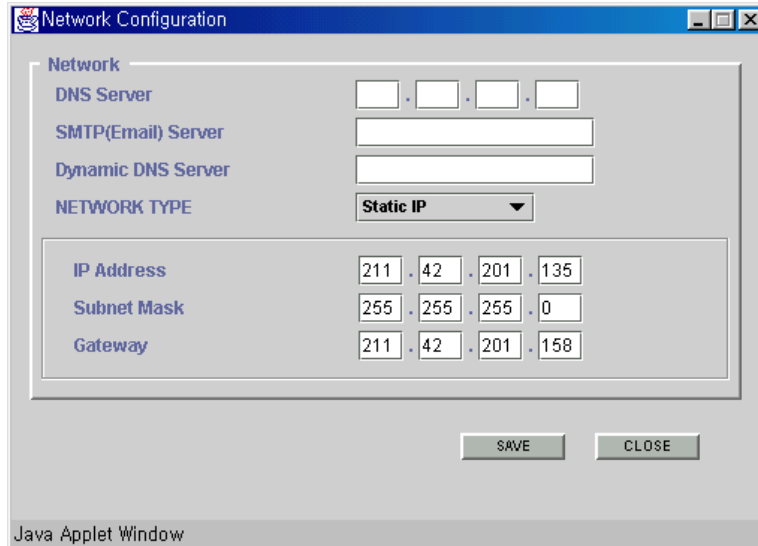
- Open the web browser, and enter the IP address on the address line and connect to WEB VIDEO SERVER' s Admin Mode.



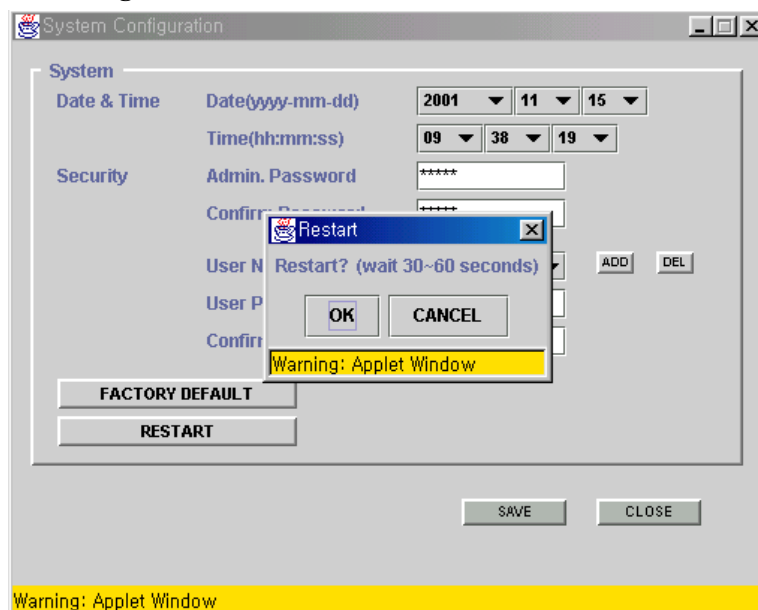
- Select " Network" menu of " System Management" in Admin Mode.



8. Enter the WEB VIDEO SERVER's IP address and detailed information regarding the IP and push the " Save" button. Input below " Network Configuration" setting at IP alteration by " arp" instruction necessarily.



9. Finally, click " RESTART" button after choosing " System" of " System Management" menu in the Admin Mode.



4-2. Setting IP by connecting to Serial Cable

• Before you begin

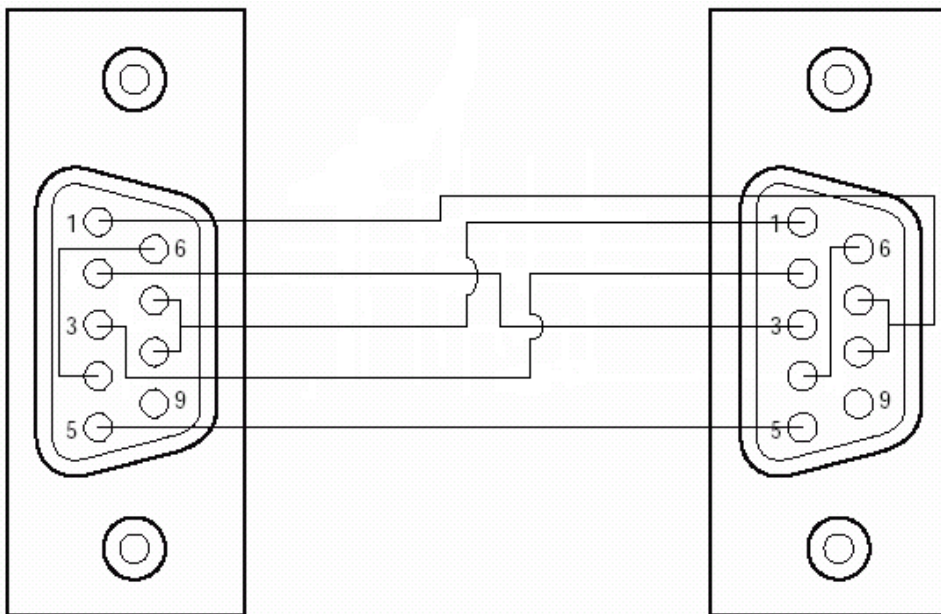
Execute from PC connected to WEB VIDEO SERVER through RS-232C Cable, this method makes easy to set various menus of initial network setting and “ System Management “ like IP Address of WEB VIDEO SERVER, Subnet Mask and Gateway. This could be used from PC which has MS Window Operation System.

The type of RS-232C cable should be used same as below. Serial COM(common) port could be used with telephone modem or mouth so that you should check if other devices in system registration information are using serial communication port.

• Making RS-232C Cable

RS-232C Cable does not include in the WEB VIDEO SERVER so that you should produce additionally. Please refer to below diagram.

* 9 Pin Female to 9 Pin Female



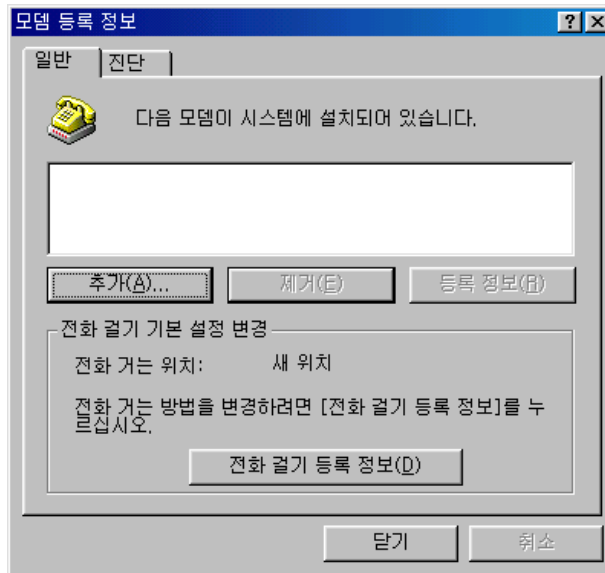


* Setting terminal emulation communication

Item	Setting Condition
Baud Rate	15200 bps
Data Bit	8 bit
Parity	None
Stop Bit	1 bit
Flow 제어	None

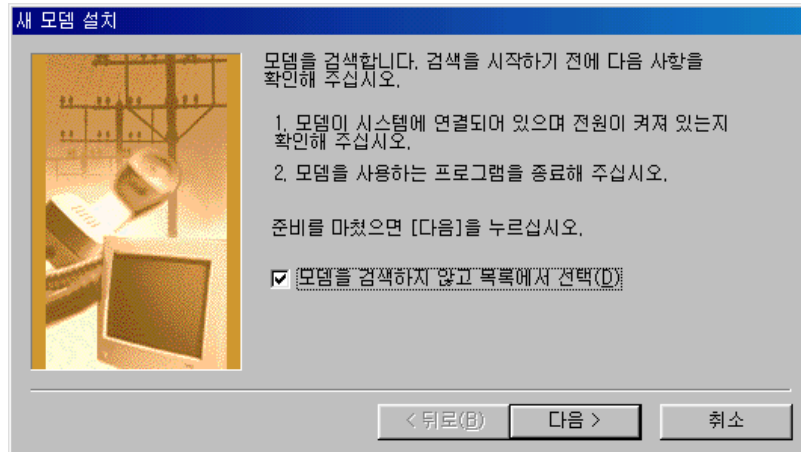
• Setting connecting program

1. After connecting Serial communication port of WEB VIDEO SERVER with Serial communication port of PC to connect though RS-232C cable, please connect to power source.
2. In the “ Start“ menu of Window , move to “ Control“ and choose “ Modem“ . Click the “ addition “ button after Below screen showing..

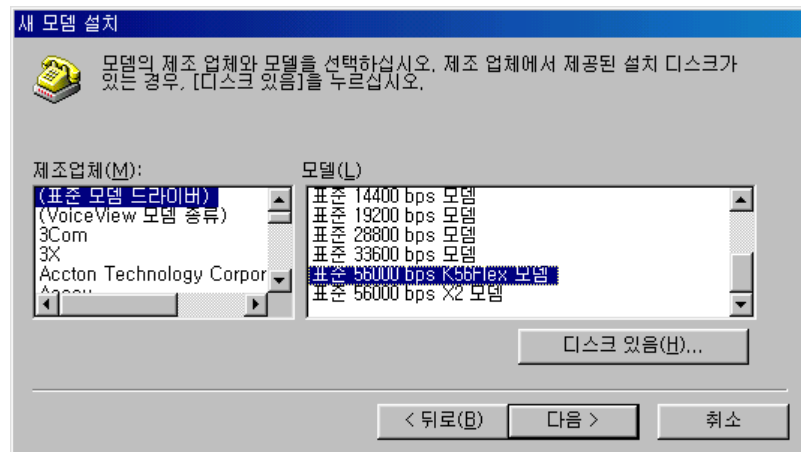


3. Please don' t get into “ Modem“ but check “ Choice(D)” and then click “ Next “ .

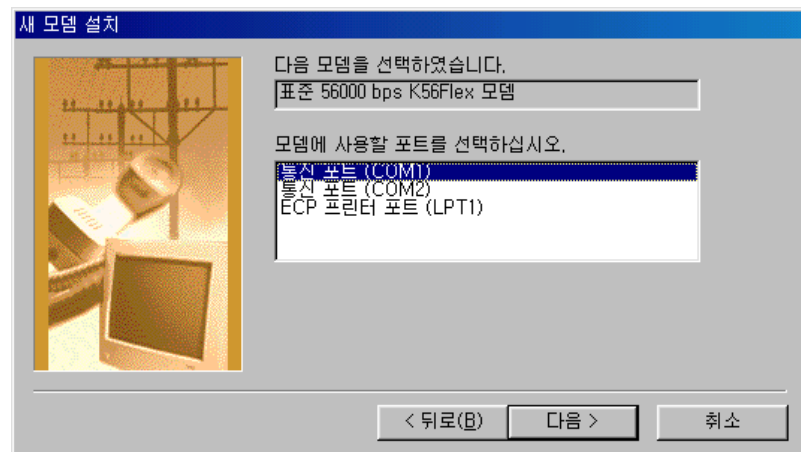




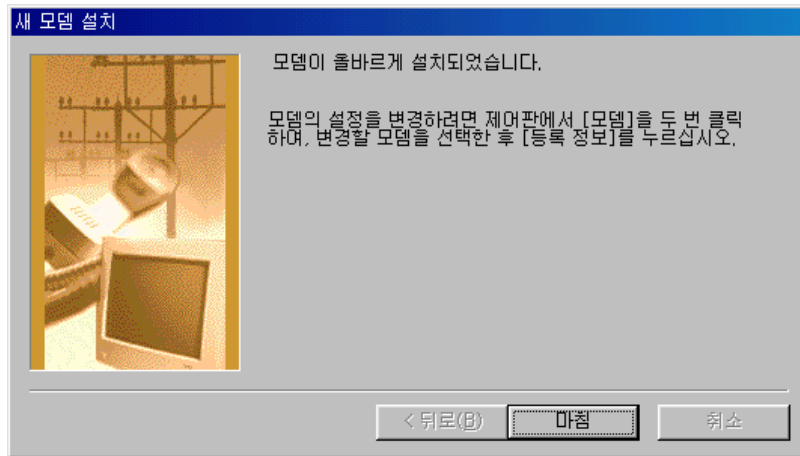
4. Choose the “ Modem“ to install. And choose “ Standard 56000bps K56Flex Modem” basically as below, and then click “ Next“ in order to continue.



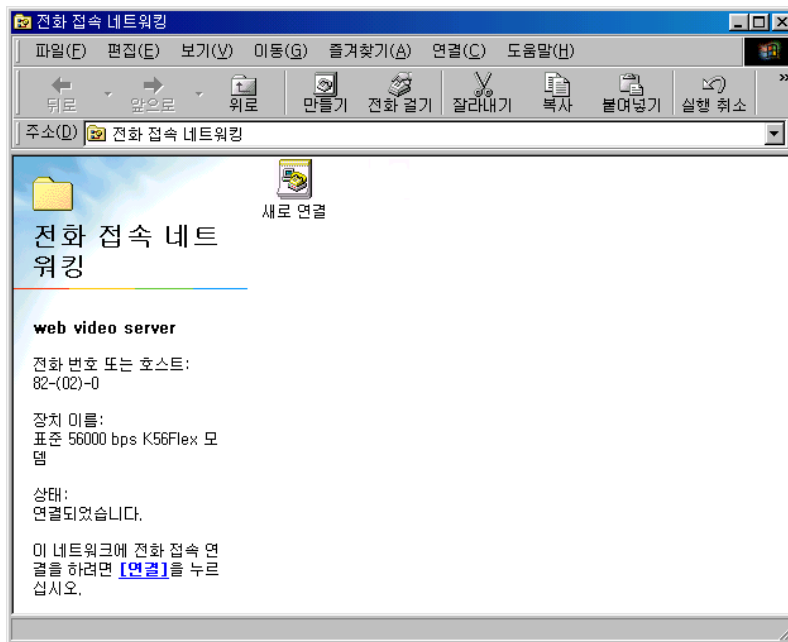
5. After choosing installing modem, click “ Next“ .



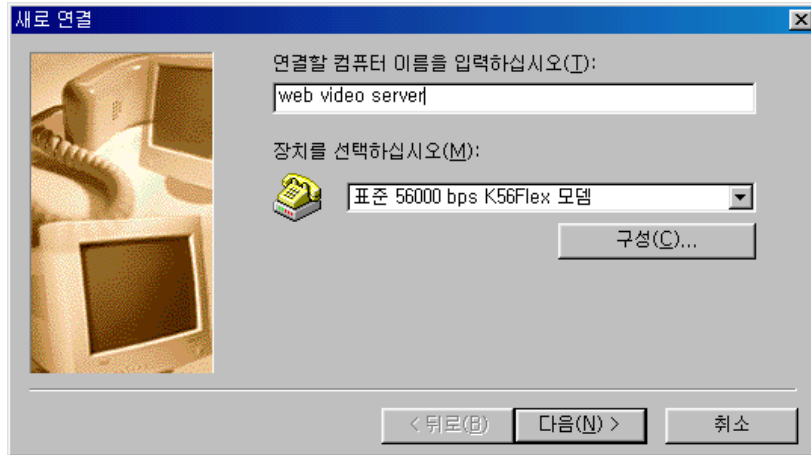
6. After checking if installation status is in correct way, click “ Finish“ button.



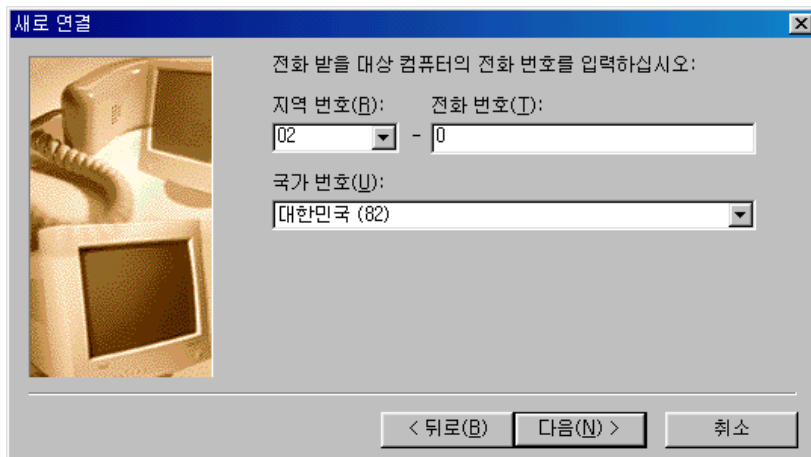
7. In the “ Start“ menu of the Window, move from “ Program“ , “ Assist Program“ to “ communication “ and choose “ Telephone Connection Network “ and then double click “ New Connection“ as below.



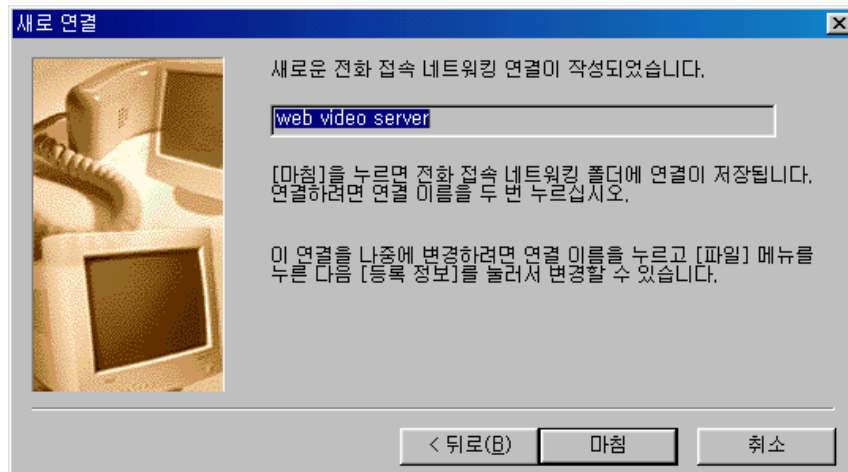
8. After typing name of Setting connection, click “ Next“ button.



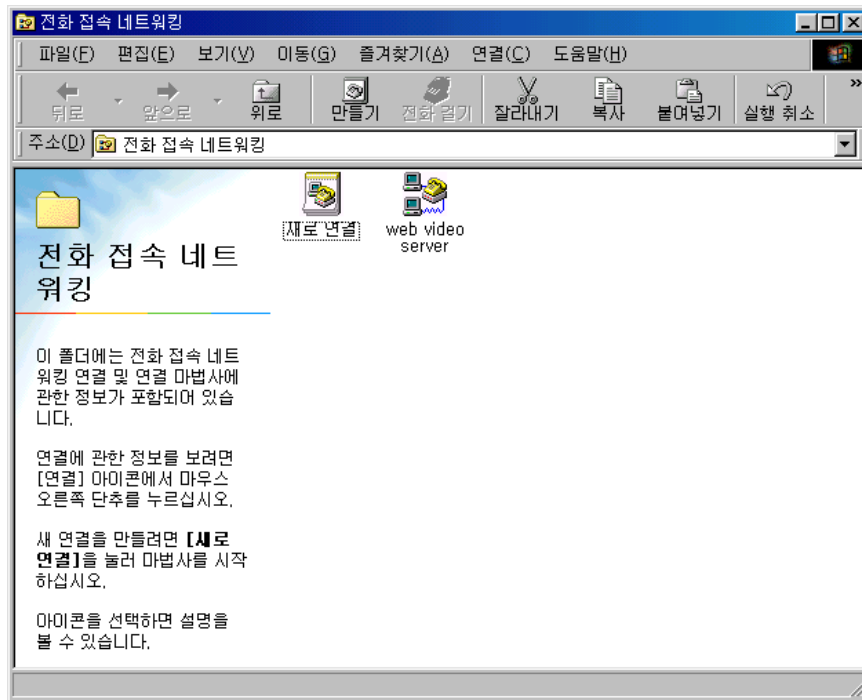
9. Input telephone number to connect. At this time, input optional number “ 0 ” in the phone number input blank.



10. If you complete telephone connecting networking, finish setting by clicking “ Finish ” button.



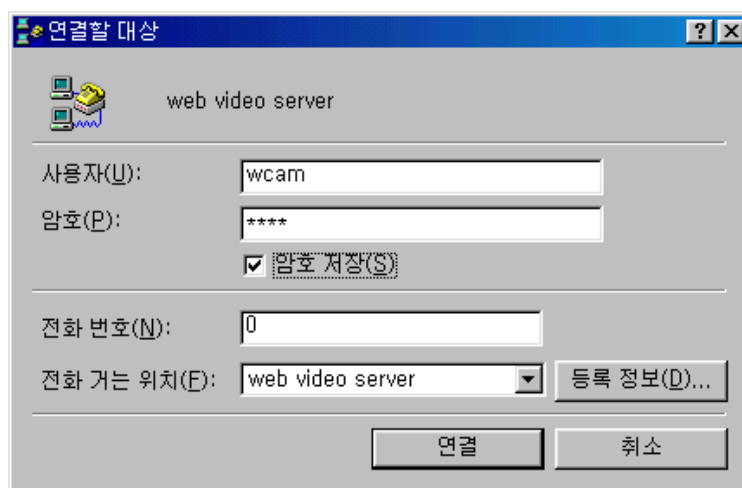
11. After checking if telephone network icon is produced, check setting status by clicking “Registration Information” .



12. Start Connecting by clicking appropriate icon. In the initial connection, below screen shows and initial user name and password of WEB VIDEO SERVER are as below.

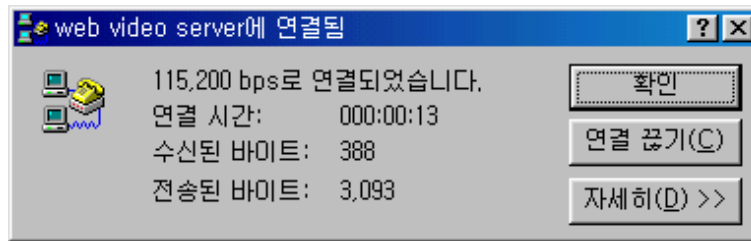
User Name : wcam

Password : wcam

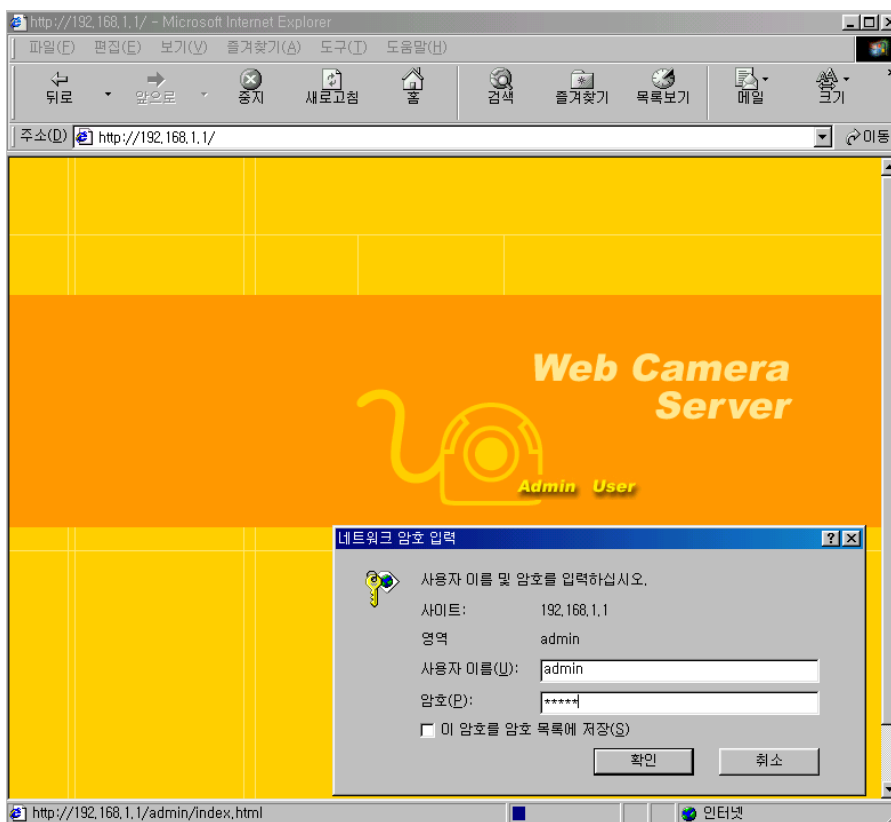


13. Check the message as below which is informing connection status is

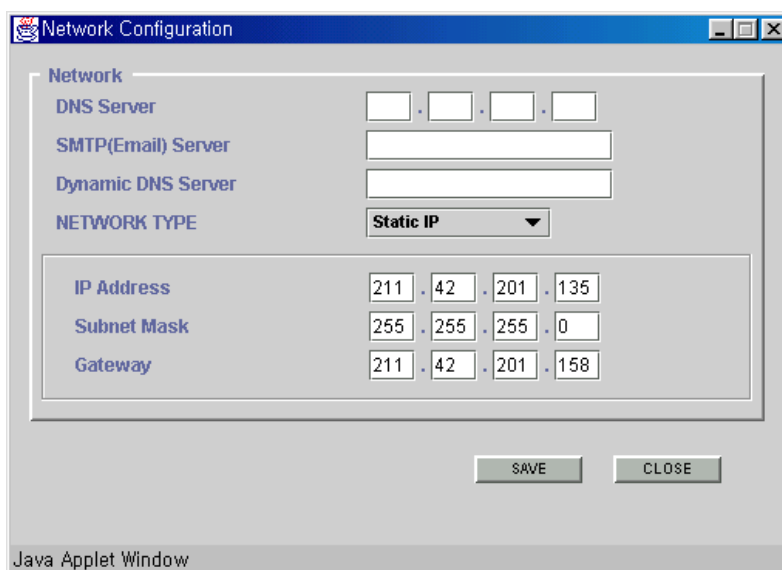
normal.



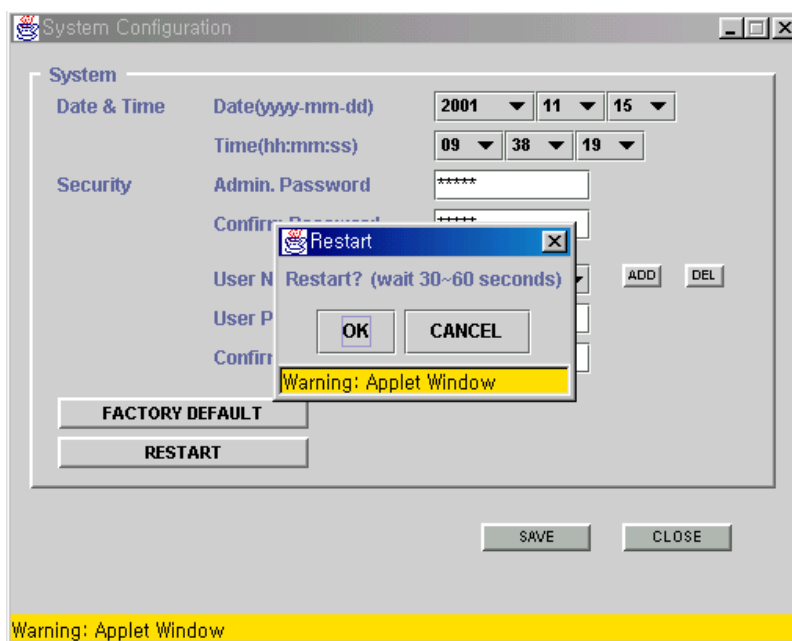
- Execute MS Internet Explorer and connect to Admin Mode after inputting exclusive use of serial telecommunication IP Address, “ 192.168.1.1“ , into Address Window as below.



- In the “ System Management” menu of Admin Mode, choose “ Network” , input IP Address and Network information and click “ SAVE“ button by saving setting status.



- 16. Finally, click “RESTART”, “OK” button after choosing “System” of “System Management” menu in the Admin Mode.



5. Log - in

After successfully setting up an IP address, please install WEB VIDEO SERVER where you want. At that time, please use Direct LAN Cable not Cross LAN Cable supplied.

Direct LAN Cable is not supplied. As for Direct LAN Cable, please contact Network Manager.

When you finished camera in a proper place, please execute a web browser (Netscape or Explorer) from a PC.

- **Recommended web browser**

- . MS Internet Explorer 5.0 or above
- . Netscape communicator 4.7x

- **User/Admin Name and password at the time of purchase is defaulted as follows**

- 1) User Mode

User Name : user
Password : user

- 2) Admin Mode

Admin Name : admin
Password : admin

5-1. User Mode Log-in

User Mode allows the user to only view displayed images without altering settings.

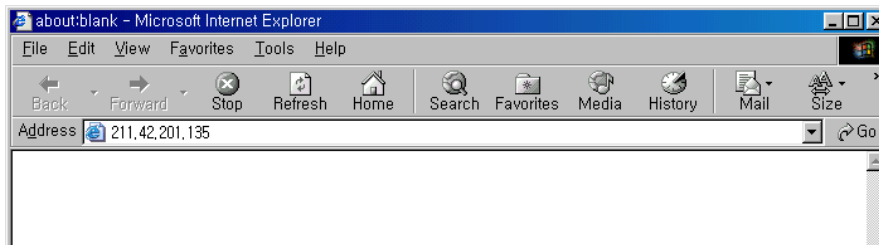
This applies when a user enters “ user” for both user name and password or the network administrator has assigned a user name and password for logging in purposes

The process to log-in in User Mode varies according to the web browser.

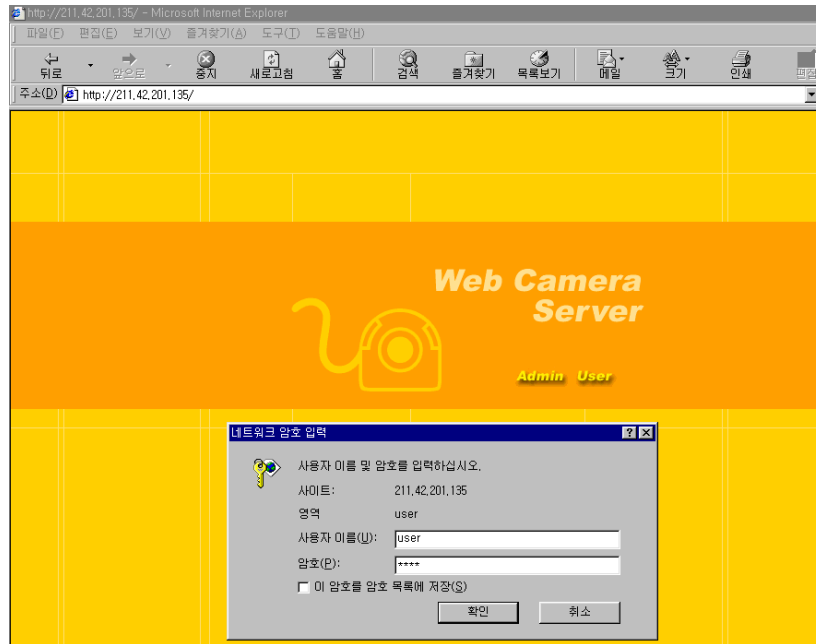
5-1-1. Using MS Internet Explorer

If you never logged in through explorer, first download ActiveX Install from WEB VIDEO SERVER. Please follow next procedure.

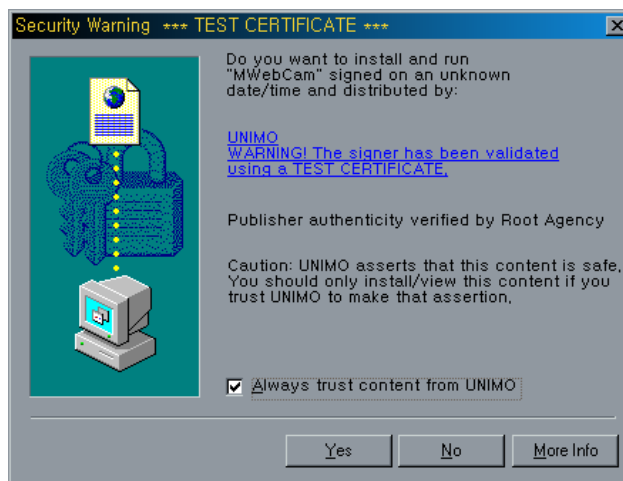
1. Open the “ MS Internet Explorer” web browser.
2. Enter the WEB VIDEO SERVER IP address in go to : xxx.xxx.xxx.xxx



3. Click the “ User” icon, and the following Log-in window appears.



4. Properly enter user name and password and click “OK” icon. Then, you should see the security message.

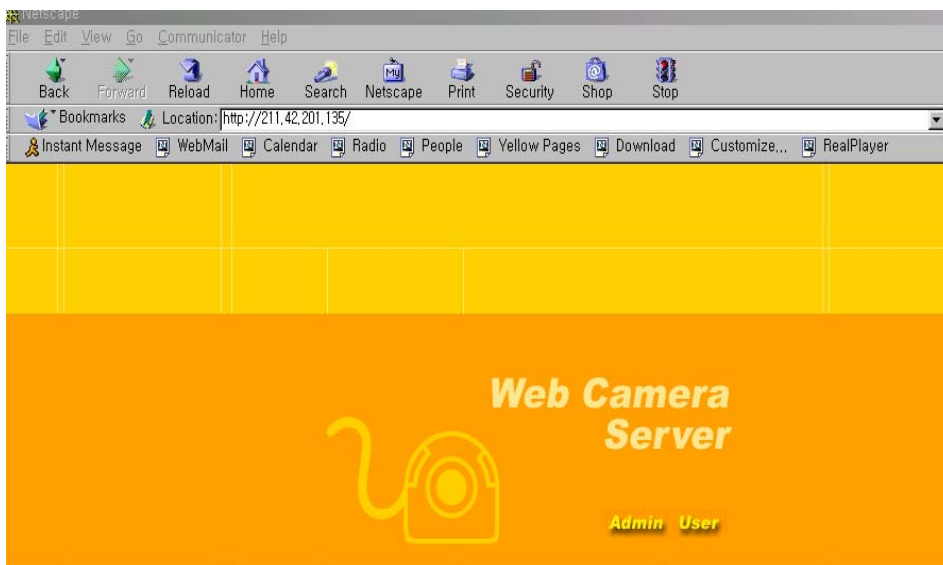


5. Click “Yes” . You just have completed downloading Explorer ActiveX Install from WEB VIDEO SERVER. Then, you will see the initial screen of User Mode.
6. Refer to “ Chapter 5. User mode” for a description of the User Mode.
7. After the initial connection, authenticating the ActiveX install program is not necessary.

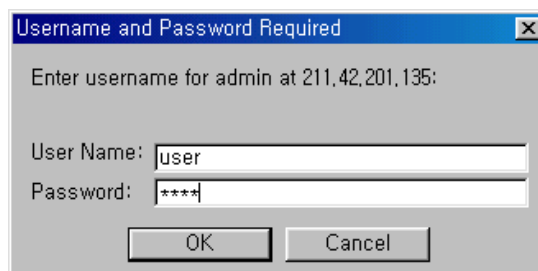
5-1-2. Using Netscape Communicator

Netscape does not require a special confirmation.

1. Open Netscape web browser
2. Enter the WEB VIDEO SERVER IP address in go to : xxx.xxx.xxx.xxx
3. If you have properly logged in, you will see the followings



4. If you are “ User” , please click “ User” . You will see the following windows.



5. Properly enter Admin/user name and password and click “ OK” icon. You should see the initial screen of Admin/User mode. Refer to “ Chapter 5. User mode” for a description of the User Mode.

5-2. Admin Mode Log-in

WEB VIDEO SERVER can be changed and managed in Admin Mode.

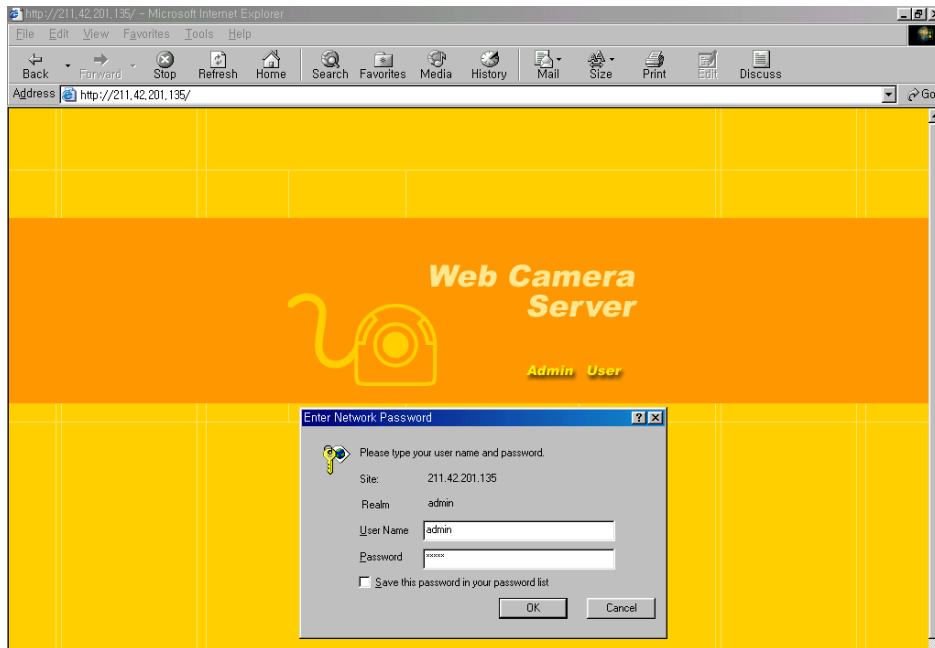
Admin Mode is embodied in Java 1.3 version.

Java 1.3 version should be installed to PC to connect to WEB VIDEO SERVER.

Java 1.3 version are included in accessory CD that is offered with WEB VIDEO SERVER.

To connect in Admin Mode, the process is the same for both MS Internet Explorer and Netscape.

1. The most recent version of the Java Program (Java 1.3 Version) needs to be installed in the PC before WEB VIDEO SERVER can be installed. Computers with Java 1.3 do not require this process.
2. Open Internet Explorer on the PC being used.
3. Enter the WEB VIDEO SERVER IP Address in the address bar and press " Enter."
4. After successfully logging on to WEB VIDEO SERVER, the following Log-In window appears.
5. Enter user name and password and click " Enter," and the first screen for WEB VIDEO SERVER Admin Mode appears. At the time of purchase, the Admin Mode user name and password are programmed as " admin."



6. Refer to “ Chapter 6. Admin Mode” for a description of the Admin Mode menu.