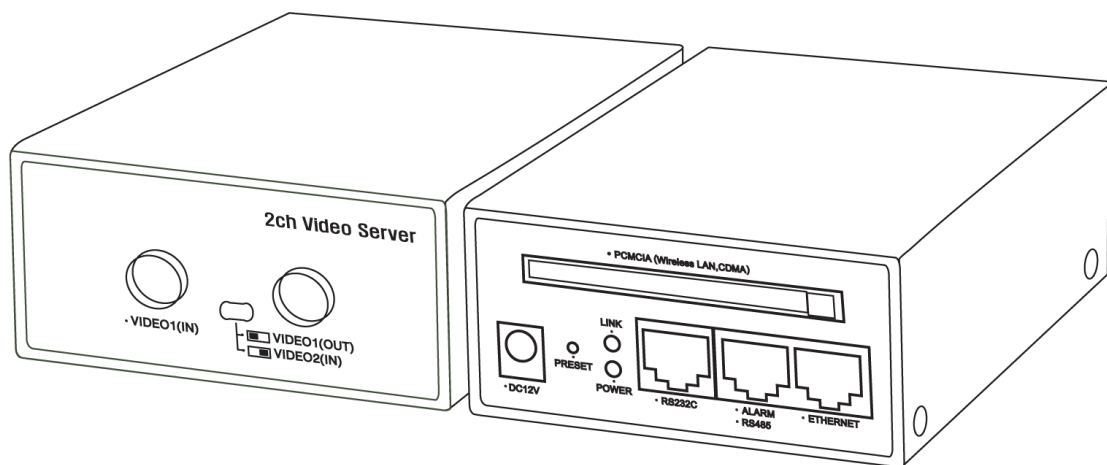


VIDEO SERVER (2 CHANNEL)



Network Installation Manual (English)

Version 1.0

Table of Contents

| | |
|--|----|
| 1. Network Installation Guide | 3 |
| 1-1 Preparing VIDEO SERVER (2 CHANNEL) Install | 3 |
| 1-2 Types of Network Connection | 4 |
| 1-3 Network Connection Method | 6 |
| 1-3-1 Link 1: Direct Connection between Computer and VIDEO SERVER (2 CHANNEL) (Computer with Ethernet Card) | 6 |
| 1-3-2 Link 2: Direct Connection between Computer and VIDEO SERVER (2 CHANNEL) (Computer without Ethernet Card, Use Serial Communication Cable)..... | 14 |
| 1-3-4 Link 4: Connect Ethernet through Cable Modem | 21 |
| 1-3-5 Link 5: Connect Ethernet through xDSL Modem..... | 23 |
| 1-3-6 Link 6: Use Cable Modem (With only 1 IP) & IP Sharing Router to connect Ethernet..... | 25 |
| 1-3-7 Link 7: Use xDSL Modem & IP Sharing Router to connect to Ethernet | 31 |
| 1-3-8 Link 8: Connect Ethernet through Telephone Modem (PSTN)..... | 36 |
| 1-3-9 Link 9: Remote Dial In Method to Telephone Modem (PSTN) | 38 |
| 1-3-10 Link 10: VIDEO SERVER (2 CHANNEL) with Wireless LAN PC Card (802.11b) to Access Point connection..... | 44 |
| 1-3-11 Link 11: VIDEO SERVER (2 CHANNEL) with CDMA Wireless Network Card | 46 |

1. Network Installation Guide

1-1 Preparing VIDEO SERVER (2 CHANNEL) Install

- **Before Connecting.**

1. Computer with Web Browser is needed.
2. Computer must have an Ethernet Card with TCP/IP function.
3. Cross LAN Cable is needed to connect VIDEO SERVER (2 CHANNEL) to Computer directly.
4. Direct LAN Cable is needed when Ethernet Hub is used.
5. Serial Communication Cable is needed to connect serial port of computer when there is no Ethernet Card.

- **'Network Set Up' Procedure for various network connection**

1. Check the environment of the network you want to set up.
2. VIDEO SERVER (2 CHANNEL) is able to support network environment of 'Static IP, xDSL, DHCP, PSTN'.
3. First, connect computer and VIDEO SERVER (2 CHANNEL) by direct connecting method'.
4. Select address of VIDEO SERVER (2 CHANNEL) in the computer remotely then connect using computer Web Browser.
5. Go to 'Admin Setting Mode' of VIDEO SERVER (2 CHANNEL), and select 'Network Configuration'.
6. Due to different network environments of set up input 'Network Type' and other Information then save.
7. To operate changed set up environment at VIDEO SERVER (2 CHANNEL), go to 'System Configuration' and click 'Reboot' to reset.
8. Check connection by looking at the signs on the computer, after setting up the network that you wanted to install VIDEO SERVER (2 CHANNEL).

1-2 Types of Network Connection

- **Link 1: Direct connection between computer and VIDEO SERVER(2 CHANNEL) (Computer with Ethernet Card, Use UTP Cross Cable)**
Often used when examining or changing condition of VIDEO SERVER (2 CHANNEL).
- **Link 2: Direct connection between computer and VIDEO SERVER (2 CHANNEL) (Computer without Ethernet Card, Use Serial Communication Cable)**
Often used when examining or changing condition of VIDEO SERVER (2 CHANNEL).
- **Link 3: Connect to VIDEO SERVER (2 CHANNEL) with Hub in Private Network (Computer with Ethernet Card, Use Direct Cable, Ethernet Hub)**
Connect directly to Hub when private network is lined up.
- **Link 4: Connectin between Cable Modem (With only 1 IP) and VIDEO SERVER (2 CHANNEL)**
Connect to Cable Modem directly to use when VIDEO SERVER (2 CHANNEL) is about to connect to Ethernet.
Before connecting to Cable Modem, change network type first then connect.
- **Link 5: Connection between xDSL Modem(With only 1 IP) and VIDEO SERVER (2 CHANNEL)**
Connect to xDSL Modem directly to use when VIDEO SERVER is about to connect to Ethernet.
Before connecting to xDSL Modem, change network type first then connect.
- **Link 6: Connection between Cable Modem (With only 1 IP) and VIDEO SERVER (2 CHANNEL) using IP Sharing Router**
Only one Cable Modem IP Address can connect several VIDEO SERVERS (2 CHANNEL) with computers using Ethernet at the same time.
To share one IP Address, IP Sharing Router is needed.
- **Link 7: Connection between xDSL Modem (With only 1 IP) and VIDEO**

SERVER (2 CHANNEL) using IP Sharing Router

Only one xDSL Modem IP Address can connect several VIDEO SERVERS (2 CHANNEL) with computers using Ethernet at the same time.

To share one IP Address, IP Sharing Router is needed.

- **Link 8: Connection between Telephone Modem (PSTN) and VIDEO SERVER (2 CHANNEL)**

Connect to Telephone Modem directly to use when VIDEO SERVER is about to connect to Internet.

Before connecting to Telephone Modem, change network type first then connect.

- **Link 9: Remote Dial In Method to Telephone Modem (PSTN)**

Call VIDEO SERVER (2 CHANNEL) that connected to Telephone Modem to connect remotely.

Only an administrator can connect to VIDEO SERVER by one-on-one.

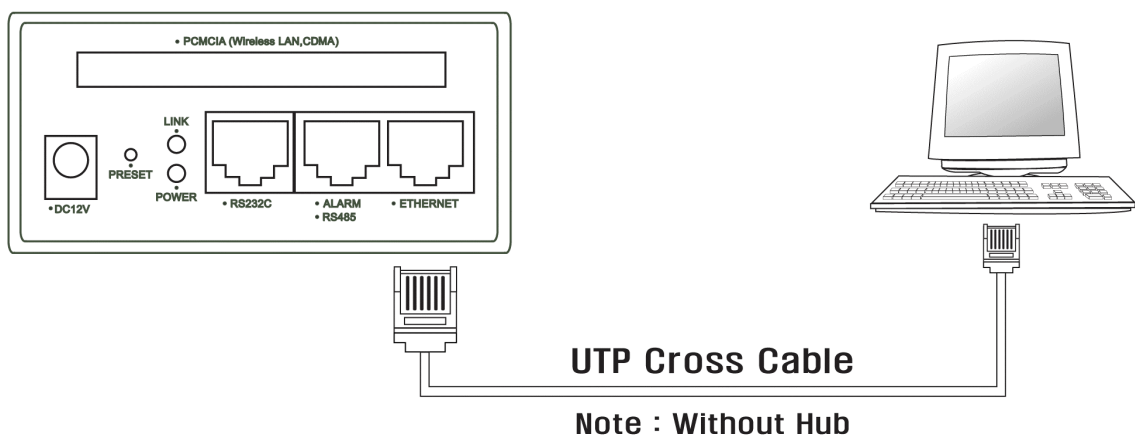
- **Link 10: VIDEO SERVER (2 CHANNEL) with Wireless LAN PC Card (802.11b) to Access Point connection**

- **Link 11: VIDEO SERVER (2 CHANNEL) with CDMA Wireless Network Card to Base Station connection**

1-3 Network Connection Method

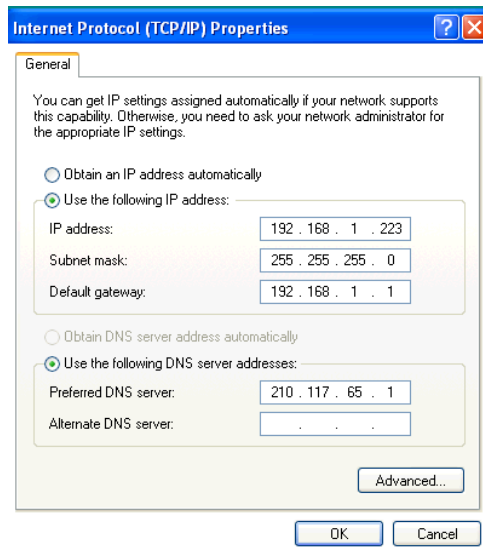
1-3-1 Link 1: Direct Connection between Computer and VIDEO SERVER (2 CHANNEL) (Computer with Ethernet Card)

- Picture of Ethernet card in computer is connected to VIDEO SERVER (2 CHANNEL). Often used when examining or changing condition of VIDEO SERVER.



- **First, Check Network Condition of computer.**
Click 'Start'-'Set Up'-'Control Panel'-'Connect Network & Internet'-'Connect Network'- Register Information of 'Ethernet Card Name' - Register Information of 'Internet Protocol (TCP/IP)'

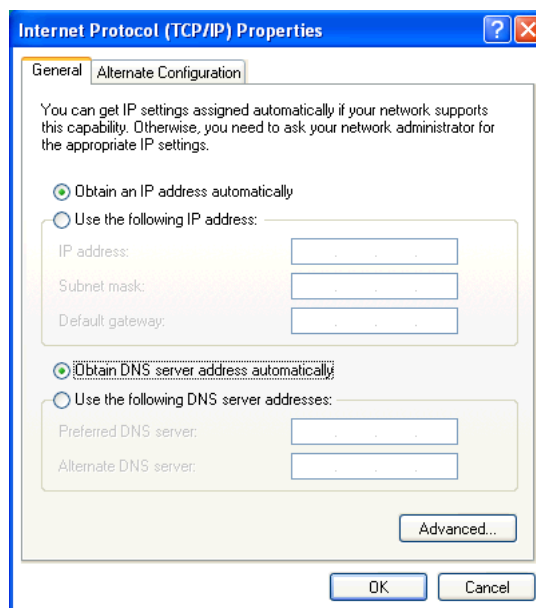
1. When Network Condition is already set, 'Use this IP Address' has been chosen as followed.

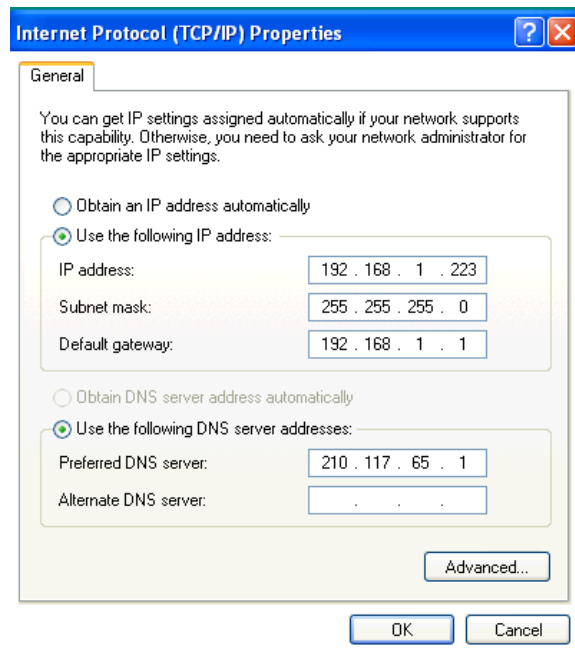


* **Moving Procedure:** Move to **'Connection Method 1'**. (Page 9)

2. When Network Condition is not set, set up condition of computer as initial Network set of VIDEO SERVER (2 CHANNEL).

Go to 'Receive IP Address Automatically' and select 'Use this IP Address' follow below network set up information to input data. Set up **Network Condition of Computer** to IP Address 192.168.1.(2~255), Subnet Mask 255.255.255.0, Standard Gateway 192.168.1.1





* **Moving Procedure** : Move to **'Connection Method 2'**. (Page 12)

- **Connection Method 1 : IP Address of computer has been set up to other Network Condition already.**

By using Ethernet, set 'IP Address' of VIDEO SERVER (2 CHANNEL) remotely to make connection possible.

1. How to connect & set up

- 1) Select IP Address of VIDEO SERVER (2 CHANNEL) to input in advance to have same condition as Computer Network.
- 2) When IP Address of Computer is 'AAA.BBB.CCC.DDD', set IP Address of VIDEO SERVER to have different ending like 'AAA.BBB.CCC.EEE'.

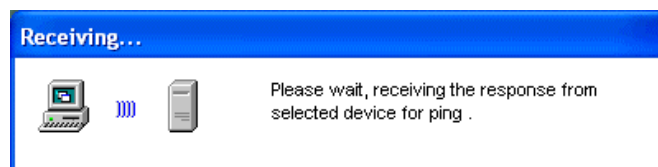
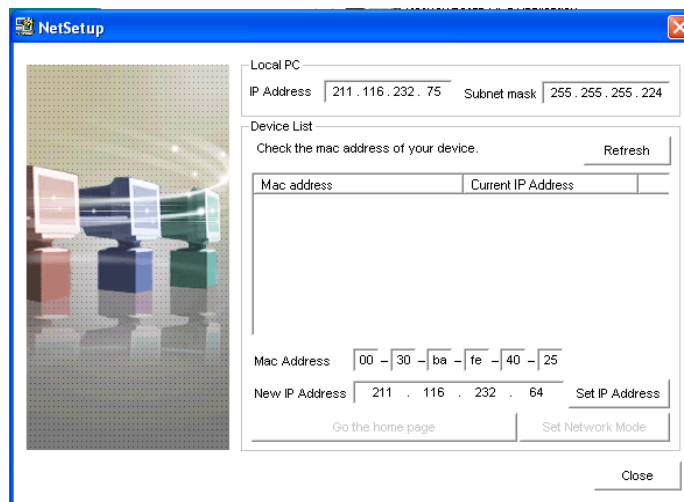
Warning! : It is important to set within same Network Group. (Computer's Net mask Value can be different)

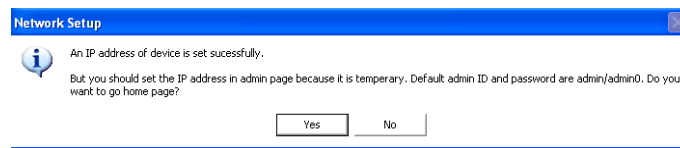
e.g.) : When Computer's IP Address is '211.116.232.67' and each Net mask Value is (a)'255.255.255.224' and (b)' 255.255.255.0' then each IP Address that must be in the same group is (a)'211.116.232.64~95' and (b)'211.116.232.1~255'.

- 3) By using bundled S/W 'Netsetup.exe' program, set up VIDEO SERVER IP Address remotely. (Refer to Additional Explanation '2')
- 4) Linux OS user must use 'arp' commander to set up VIDEO SERVER IP Address remotely. (Refer to Additional Explanation '3')
- 5) Input VIDEO SERVER IP Address that was set up through Computer Web Browser and connect.
- 6) Beware when power is off IP Address cannot be saved since its temporarily set up by above method.
- 7) Go to 'Admin Setting Mode' of VIDEO SERVER (2 CHANNEL), change each detail to right condition and save.

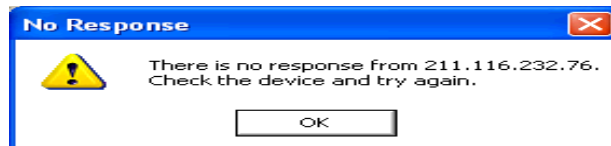
2. How to use Window OS 'NetSetup.exe' Program

- 1) To set IP Address of VIDEO SERVER (2 CHANNEL), this address computation step is necessary.
 - a. When computer IP Address is '211.116.232.67' and Net Mask Value is '255.255.255.224', VIDEO SERVER IP Address must be in a same network group from '211.116.232.64' to '211.116.232.95' such as '211.116.232.73'.
 - b. Check MAC Address on VIDEO SERVER (2 CHANNEL).
E.g.) '00:30:ba:fe:40:22'.
- 2) How to set up by operating bundled S/W NetSetup.exe
 - a. Automatically shows lists of VIDEO SERVER (2 CHANNEL). However, in case of direct connection, no lists of VIDEO SERVER.
 - b. Immediately input 'MAC Address' and 'New IP Address' since VIDEO SERVER does not show on the set list.
 - c. If you click 'IP set up", after remote setting up process, a window, which tells you its successfulness, comes out.
 - d. If succeed click 'OK' to connect automatically to VIDEO SERVER (2 CHANNEL) by web browser. (<http://211.116.232.73>)





- e. If there is no answer from the program, click 'Refresh' and try again.
- f. If this continues, check again 'Equipment Set Condition', 'MAC Address', and 'New Given IP Address'.



- g. Go to 'Admin Setting Mode' of VIDEO SERVER (2 CHANNEL), change each detail to right condition and save.

3. How to use Linux OS 'arp' Program

Warning! : This method is only good for less than 20 minutes after VIDEO SERVER (2 CHANNEL) power is on.

- 1) To set IP Address of VIDEO SERVER (2 CHANNEL), this address computation step is necessary.
 - a. When computer IP Address is '211.116.232.67' and Net Mask Value is '255.255.255.224' VIDEO SERVER IP Address must be in a same network group from '211.116.232.4' to '211.116.232.95' such as '211.116.232.73'.
 - b. Check MAC Address on the VIDEO SERVER (2 CHANNEL).
E.g.) '00:30:ba:fe:40:22'
- 2) How to use 'arp' commander from Command Prompt or Commander Terminal
 - a. Usage of 'arp' and 'ping' is as followed.


```
#arp -s (Set up IP Address) (Product MAC Address)
#ping (Set up IP Address)
```

* **Warning!** : 'Product MAC Address' input section is different in Window OS and Linux OS, therefore input as followed. (Window OS : '00-30-ba-fe-40-10' & Linux OS : '00:30:ba:fe:40:22')
 - b. First set 'arp' and then check VIDEO SERVER (2 CHANNEL) answer through 'ping'.


```
# arp -s 211.116.232.73 00-30-ba-fe-40-22
# ping 211.116.232.73
```

(Response messages of VIDEO SERVER (2 CHANNEL))

- c. Check the message of its successfulness in setting IP Address.
If succeed : Reply from 211.116.232.73: bytes=32 time<1ms TTL=255
If failed : Request timed out
- d. If succeed, connect to the VIDEO SERVER (2 CHANNEL).by putting IP Address (<http://211.116.232.73>) set by web browser.
If failed, after resetting the VIDEO SERVER (2 CHANNEL), check the product MAC Address and set IP Address and then start over again.
- e. Go to 'Admin Setting Mode' of VIDEO SERVER (2 CHANNEL), change each detail to right condition and save.

- **Connection Method 2 : If Computer IP Address has not been set, input VIDEO SERVER (2 CHANNEL) network condition by yourself.**

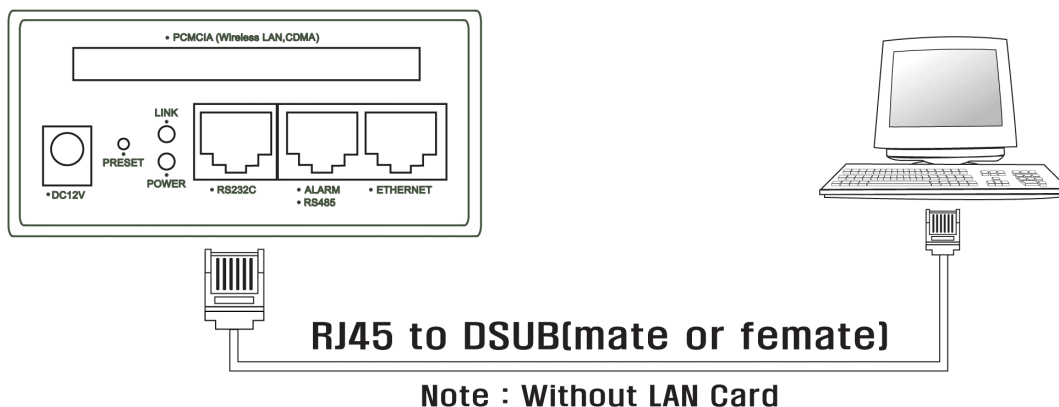
Connect to the VIDEO SERVER (2 CHANNEL) directly by putting Computer Network Set Up yourself.

1. How to connect & set up

- 1) Input computer network condition as same network group as initial network condition of VIDEO SERVER. (2 CHANNEL). IP Address 192.168.1.220, Subnet Mask 255.255.255.0, and Standard Gateway 192.168.1.1, input computer network condition to IP Address 192.168.1.(2~255), Subnet Mask 255.255.255.0, and Standard Gateway 192.168.1.1
- 2) Go to Computer Network Set UP and set IP Address.
Click 'Start' – 'Set Up' – 'Control Panel' – 'Connect Network & Internet' – 'Connect Network'–Register information of 'Ethernet Card Name' – Register information of 'TCP/IP' and **input** as followed.
Computer network condition : IP Address 192.168.1.(2~255), Subnet Mask 255.255.255.0, Standard Gateway 192.168.1.1
- 3) Through computer web browser, input VIDEO SERVER's initial set address 'http://192.168.1.220' and log in.
- 4) Go to 'Admin Setting Mode' of VIDEO SERVER (2 CHANNEL), change each detail to right condition and save.

1-3-2 Link 2: Direct Connection between Computer and VIDEO SERVER (2 CHANNEL) (Computer without Ethernet Card, Use Serial Communication Cable)

- Picture of a connection between serial port of computer and VIDEO SERVER (2 CHANNEL). Often used when examining or changing condition of VIDEO SERVER (2 CHANNEL).

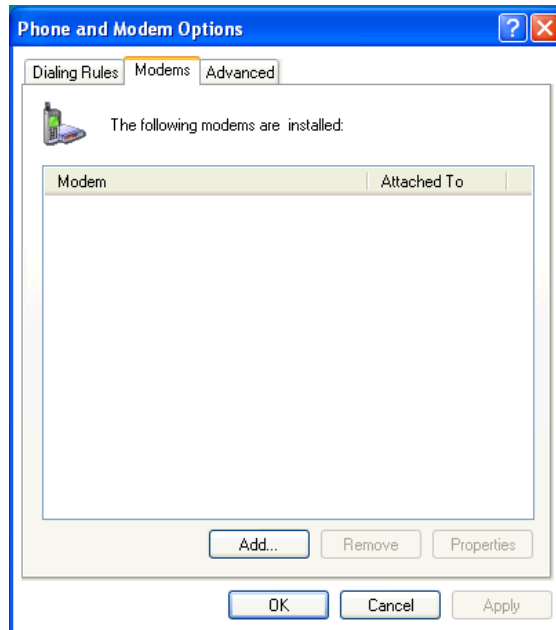


VIDEO SERVER (2 CHANNEL) Set up Procedure

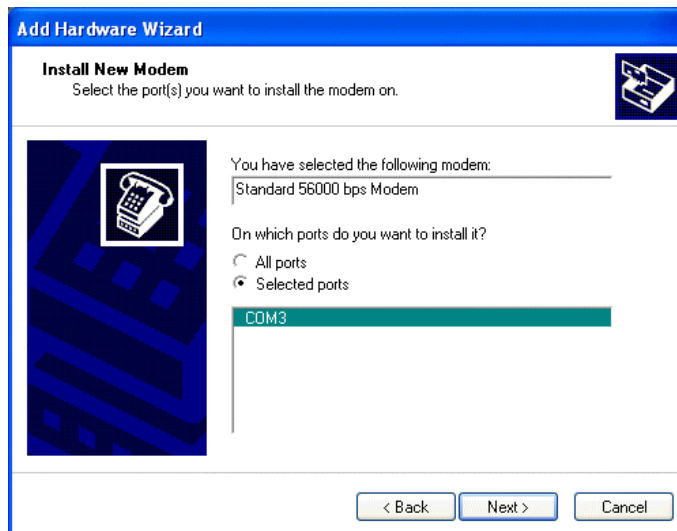
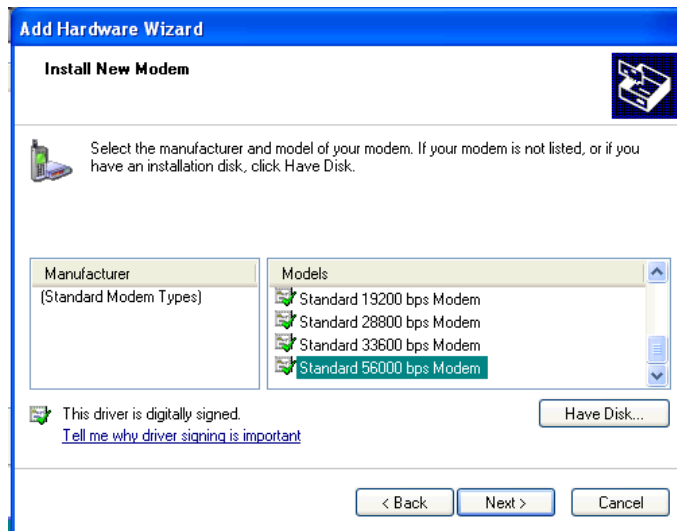
Way to connect to 'Serial Server' of VIDEO SERVER (2 CHANNEL), through computer's serial communication.

1. How to add Virtual Standard Modem (56Kbps) in the computer. (Set up only once)

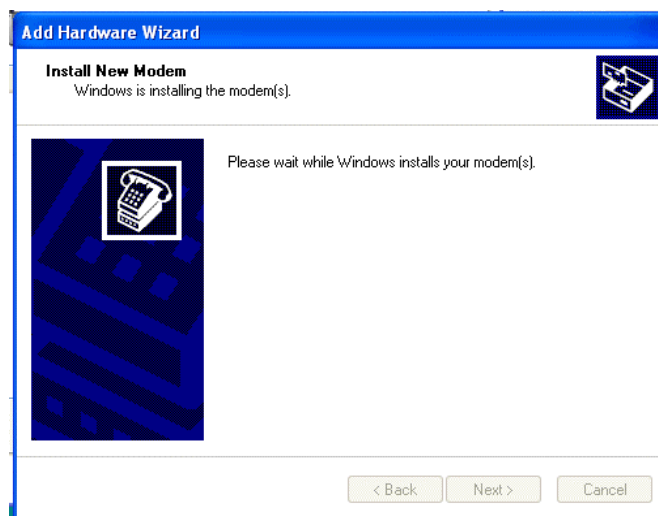
- 1) Add Serial Port 'Virtual Modem (Standard Modem 56Kbps)' in the computer to do serial communication with VIDEO SERVER (2 CHANNEL).
- 2) Click 'Start'-'Control Panel'-'Printer & Hardware'-'Telephone & Modem Option' to click modem 'Add' button.
- 3) Go to 'Hardware Add Wizard' and click 'Do not search Modem and select at the list' button and click 'Next'.

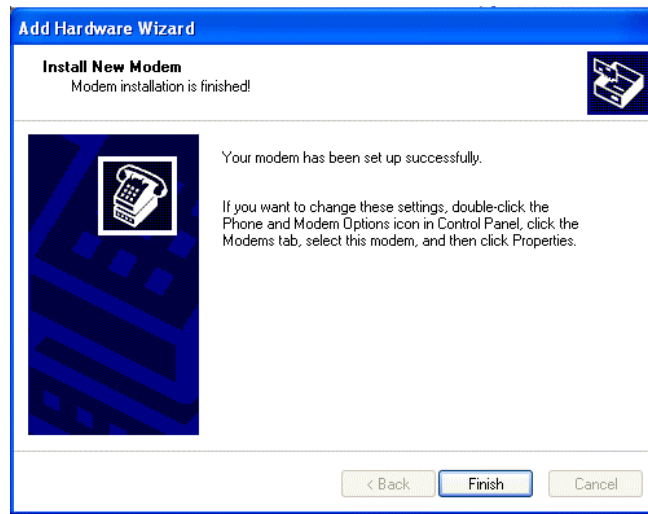


- 4) From the 'Types of Standard Modem' list, select 'Standard 56000bps Modem', then click 'Next'.
- 5) Time to choose serial port to connect to VIDEO SERVER (2 CHANNEL), click 'COM 1' here.



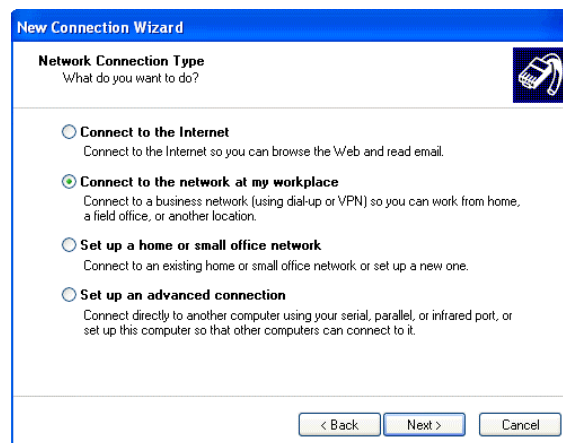
6) Wait until modem set up is normally done then click 'End' to finish modem addition.






2. How to line up 'Telephone Connection Network Link' (Set up only once)

- 1) Click 'Start'-'Set Up'-'Control Panel'-'Network & Internet Connect'-'Network Connect' and 'Make New Connection'.
- 2) Go to 'Company Network Link' and select 'Telephone Connect' and click 'Next'



- 3) Go to 'Network Link' and select 'Telephone Connection Link', input 'Link Name' and click 'Next'.



New Connection Wizard

Network Connection
How do you want to connect to the network at your workplace?

Create the following connection:

- Dial-up connection**
Connect using a modem and a regular phone line or an Integrated Services Digital Network (ISDN) phone line.
- Virtual Private Network connection**
Connect to the network using a virtual private network (VPN) connection over the Internet.

< Back Next > Cancel



New Connection Wizard

Connection Name
Specify a name for this connection to your workplace.

Type a name for this connection in the following box.

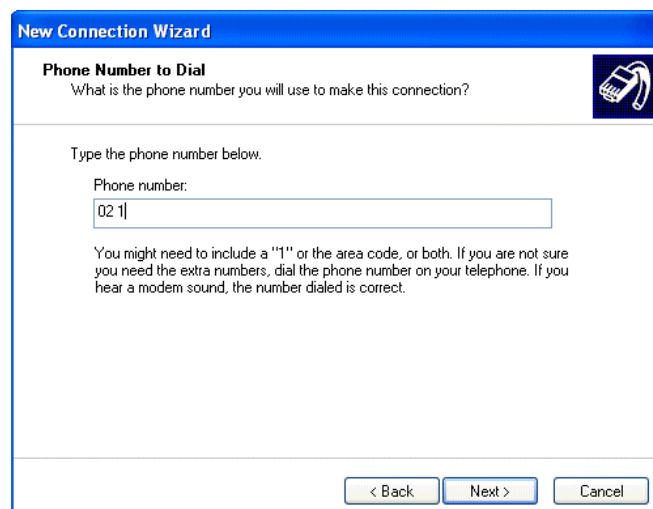
Company Name

Network Camera

For example, you could type the name of your workplace or the name of a server you will connect to.

< Back Next > Cancel

- 4) Go to 'Number to Dial' just input any number like '02 1' and click 'Next' to finish new link set up.



New Connection Wizard

Phone Number to Dial
What is the phone number you will use to make this connection?

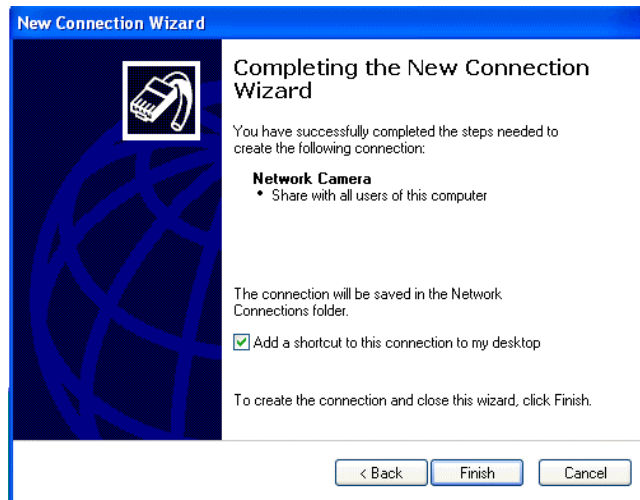
Type the phone number below.

Phone number:

02 1

You might need to include a "1" or the area code, or both. If you are not sure you need the extra numbers, dial the phone number on your telephone. If you hear a modem sound, the number dialed is correct.

< Back Next > Cancel

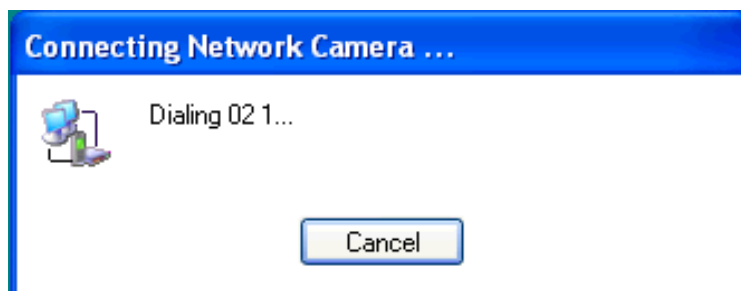


3. How to Connect through 'Telephone Connection Network Link'.

- 1) Click 'Link Name' that is on the main screen, input User Name/Password as 'wcam/wcam', and then click 'Dial'.

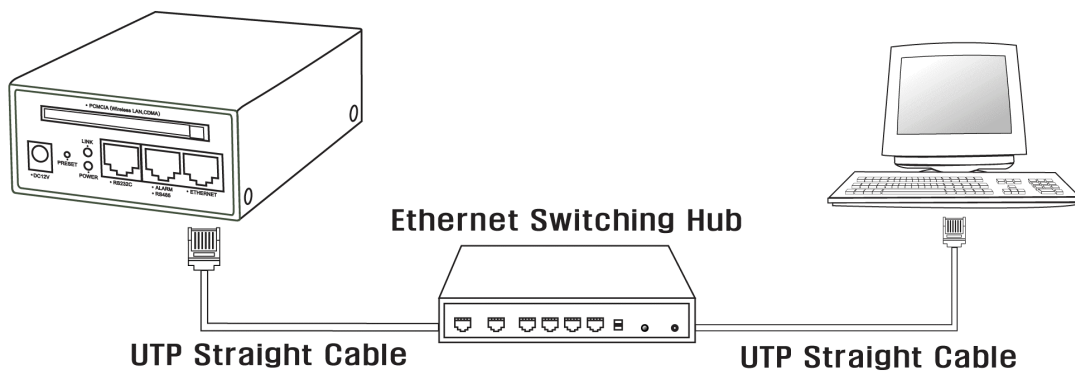


- 2) When telephone link is successful, computer is set up by newly connected 'Telephone Connection Network Link'.
- 3) Input Standard Address of VIDEO SERVER 'Serial Server' 192.168.1.1' on the web browser and log in. (<http://192.168.1.1>)
- 4) Go to VIDEO SERVER 'Admin Setting Mode', change each detail to right condition and save.



1-3-3 Link 3 : Connect to VIDEO SERVER (2 CHANNEL) with Ethernet Hub in Private Network (Computer with Ethernet Card, Direct Cable, Ethernet Hub)

- Picture of a connection between computer and VIDEO SERVER (2 CHANNEL) by using Ethernet Hub. Connect Ethernet Hub to In-plant private network with existing network

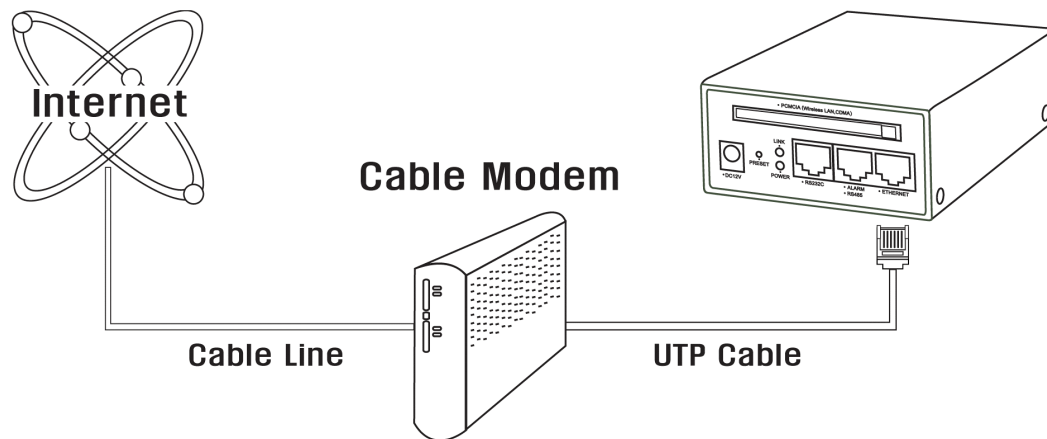


- How to Connect to VIDEO SERVER (2 CHANNEL)
Same as 'Link 1'

1-3-4 Link 4 : Connect Ethernet through Cable Modem

- Picture of a direct connection between Cable Modem and VIDEO SERVER (2 CHANNEL).

First, connect computer with VIDEO SERVER (2 CHANNEL), and select network type to 'Cable Modem', then set up like the picture.



- **VIDEO SERVER (2 CHANNEL) network Set up Procedure**

Like 'Link 1' or 'Link 2', connect computer with VIDEO SERVER (2 CHANNEL) and change VIDEO SERVER (2 CHANNEL), network set up then connect to Cable Modem.

1. How to Set up

- 1) Use method of 'Link 1' or 'Link 2' to connect to VIDEO SERVER (2 CHANNEL), and move to 'Admin Setting Mode'.
- 2) Select 'Network Configuration' in 'Admin Setting Mode' menu.
- 3) Input 'Common Part' section first. (Common form of each network)
- 4) Select 'DHCP' (Most common 'Network Type' of 'Cable Modem'). If different, contact ISP (Internet Service Provider).
- 5) You must input 'Dynamic DNS Server' (ns.wisecam.co.kr) Address. ('DHCP' lets VIDEO SERVER get dynamic IP Address)
- 6) Input 'DNS Server' to apply Domain Name (On 'Dynamic DNS Server' section), contact ISP (Internet Service Provider).
- 7) Do not select 'Dial in'. If you want to connect to 'External Modem', use 'Dial in'.

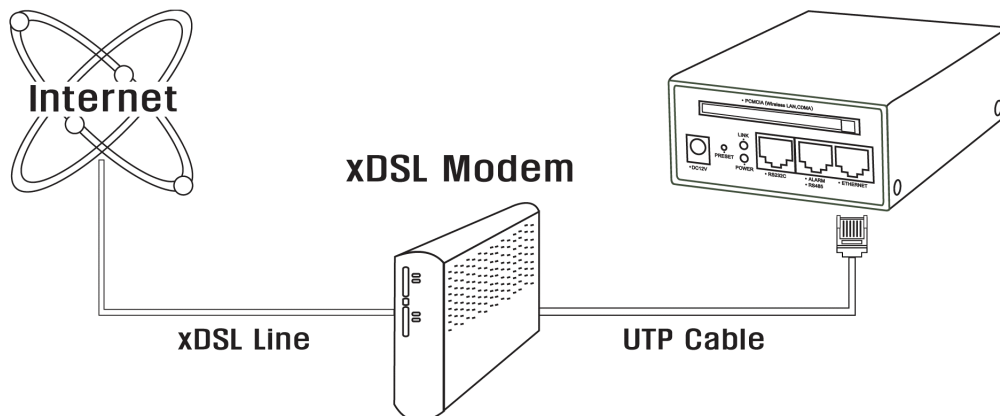
| Common Part | |
|----------------------|---------------------------------|
| DNS Server 1 | 210 . 117 . 65 . 1 |
| DNS Server 2 | |
| SMTP(email) Server | smtp.krline.net |
| Dynamic DNS Server 1 | ns.wisecam.co.kr |
| Dynamic DNS Server 2 | |
| Dial In | <input type="checkbox"/> Enable |
| NetworkType | DHCP |

- 8) Click 'Save' to apply changed information.
- 9) Move to 'System Configuration' and click 'Reboot' to apply changed set up information.
- 10) Connect 'Cable Modem' to VIDEO SERVER (2 CHANNEL) like the 'Picture' below and check the network condition through LED Indicator of VIDEO SERVER (2 CHANNEL).
- 11) From external network, input '<http://wfe4022.wisecam.co.kr>' address on the computer web browser and check for the connection.
- 12) If you cannot connect to VIDEO SERVER (2 CHANNEL) from external network, check user ID, password, and other information.
- 13) These can be the problems when external network connection to 'VIDEO SERVER Web Server' is not in order.
 - a. Web Server Port of VIDEO SERVER (2 CHANNEL), is normally set up to # '80', but ISP (Internet Service Provider) might have closed that port by force. Change Web Server Port to above # '1024' and reset. First, connect computer with VIDEO SERVER (2 CHANNEL), go to 'System Security' in 'Admin Setting Mode' menu and input in the 'Web Server Setting' section. If you changed port to '8080', VIDEO SERVER Address becomes 'VIDEO SERVER IP Address: Port Number'.
e.g.) '<http://wfe4022.wisecam.co.kr:8080>'
Some types of modem will not work when recalled MAC Address of a product, which was connected to 'Cable Modem' at first, is used in a connection.
 - b. If product is other than VIDEO SERVER (2 CHANNEL), call the ISP (Internet Service Provider) and initialize the modem.

1-3-5 Link 5 : Connect Ethernet through xDSL Modem

- Picture of a direct connection between xDSL and VIDEO SERVER (2 CHANNEL).

First, connect computer with VIDEO SERVER (2 CHANNEL), change the network type to 'xDSL modem', and then set up like the picture below.



- **VIDEO SERVER (2 CHANNEL) Network Set up Procedure**

Like 'Link 1' or 'Link 2', connect computer with VIDEO SERVER (2 CHANNEL) and change VIDEO SERVER (2 CHANNEL) network set up then connect to xDSL Modem.

1. How to set up

- 1) Use method of 'Link 1' or 'Link 2' to connect to VIDEO SERVER (2 CHANNEL) and computer, then move to 'Admin Setting Mode'.
- 2) Select 'Network Configuration' in 'Admin Setting Mode' menu.
- 3) Input 'Common Part' section first. (Common form of each network)
- 4) Select 'Network Type' to 'PPPoE' (Most 'xDSL Modem' is ADSL service). If different, contact ISP (Internet Service Provider).
- 5) You must input 'Dynamic DNS Server' (ns.wisecam.co.kr) Address. ('PPPoE' lets VIDEO SERVER get Dynamic IP Address)
- 6) Input 'DNS Server' to apply Domain Name (On 'Dynamic DNS Server' section), contact ISP (Internet Service Provider).
- 7) Do not select 'Dial in'. If you want to connect to 'External Modem', use 'Dial in'.

| Common Part | |
|----------------------|---------------------------------|
| DNS Server 1 | 210 . 117 . 65 . 1 |
| DNS Server 2 | |
| SMTP(email) Server | smtp.krline.net |
| Dynamic DNS Server 1 | ns.wisecam.co.kr |
| Dynamic DNS Server 2 | |
| Dial In | <input type="checkbox"/> Enable |
| NetworkType | PPPoE |

8) Input user's ID and password to log in to ISP (Internet Service Provider).

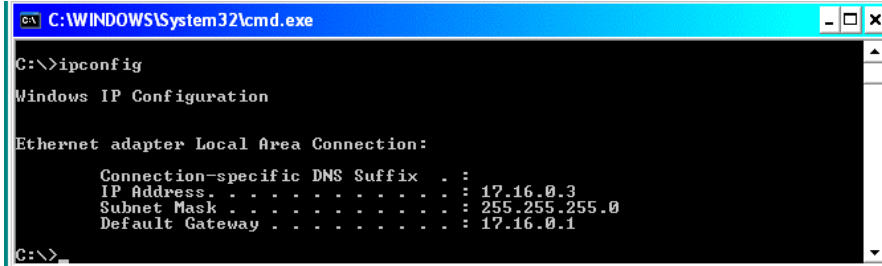
| PPPoE | |
|------------------|------|
| User Name | wcam |
| User Password | ●●● |
| Confirm Password | ●●● |

SAVE

- 9) Click 'Save' to apply changed information.
- 10) Move to 'System Configuration' and click 'Reboot' to apply changed set up information.
- 11) Connect 'xDSL Modem' to VIDEO SERVER (2 CHANNEL) like the 'Picture' below and check the network condition through LED Indicator.
- 12) These can be done when external network connection to VIDEO SERVER Web Server is not in order. (Internet is connected)
 - a. Web Server Port of VIDEO SERVER (2 CHANNEL) is normally set up to # '80', but ISP (Internet Service Provider) might have closed that port by force. Change Web Server Port to above # '1024' and reset. First, connect computer with VIDEO SERVER (2 CHANNEL), go to 'System Security' in 'Admin Setting Mode' menu and input in the 'Web Server Setting' section. If you changed port to '8080', VIDEO SERVER (2 CHANNEL) Address becomes 'VIDEO SERVER IP Address:Port Number'.
e.g.) 'http://wfe4022.wisecam.co.kr:8080'
 - b. Some types of modem will not work when recalled MAC Address of a product, which was connected to 'Cable Modem' at first, is used in a connection. If product is other than VIDEO SERVER (2 CHANNEL), call the ISP (Internet Service Provider) and initialize the modem.

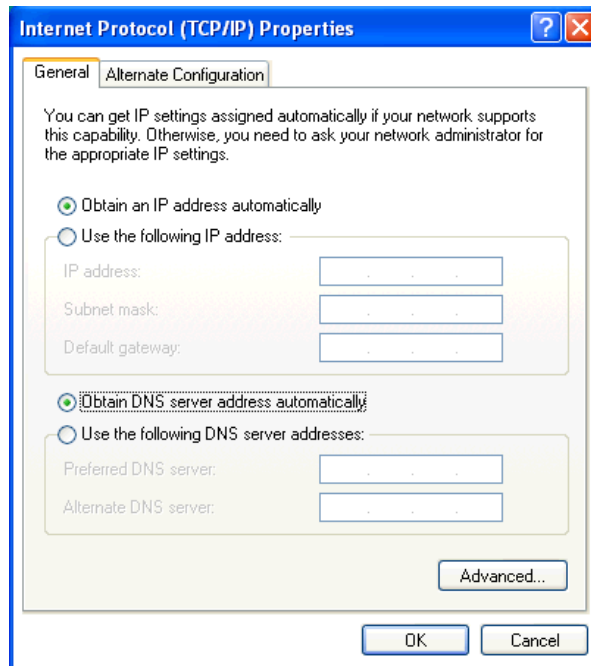
Network (LAN)' and take notes.

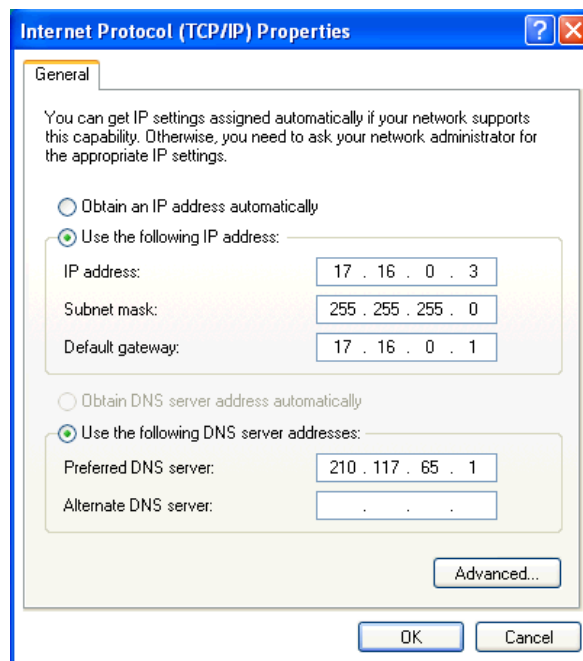
- 5) To find out the automatically received 'IP Address', input '# ipconfig' at the 'Command prompt window', then you will see the address.



e.g.) IP Address '172.16.0.3', Subnet Mask '255.255.255.0', Gateway '172.16.0.1'
 Input above network address at 'Use Next IP Address' to use.

- 6) Go to 'TCP/IP' again and select 'Use Next IP Address', then input above information to use. Set up computer to 'Static IP Address' is to fix VIDEO SERVER (2 CHANNEL) IP Address that set up in Internal Network (LAN).





- 7) Connect to 'IP Sharing Router' and set up for the connection with 'Cable Modem'.
- 8) Use 'Gateway' address to input connecting address of 'IP Sharing Router. E.g.)
'http://172.16.0.1'
- 9) After connecting to 'IP Sharing Router', select network type of 'WAN' to 'DHCP' (With 'Cable Modem')
- 10) Do not use 'DHCP Server', which is offered for equipment needed in a connection between the inward of 'IP Sharing Router' and 'Internal Network (LAN)'.
- 11) Save all the changed information of 'IP Sharing Router' and 'Reboot' to apply.
- 12) Check for the connectivity of Internet by web browser in the computer.
- 13) If Ethernet connection has no problem with computer, set up of 'IP Sharing Router' and 'Cable Modem' has no trouble.
- 14) If Ethernet connection has some problem with computer, contact ISP (Internet Service Provider) and 'IP Sharing Router' company for the detail. Contact network type of Cable modem to ISP (Internet Service Provider) and contact distributor for 'IP Sharing Router' usage.
- 15) Need to set up 'Port Forwarding' to connect from external Network (WAN) to internal Network (LAN) VIDEO SERVER (2 CHANNEL).
- 16) Refer to 'IP Sharing Router' manual when setting 'Port Forwarding'.
e.g.)
 - a. If there are three VIDEO SERVERS to set up in the internal Network (LAN), decide which 'Internal IP Address' and 'Web Server Port' to input.

Computer IP Address is 172.16.0.3 therefore '172.16.0.XXX' becomes

LAN IP Address region as below.

* CAM 1 : LAN IP Address = 172.16.0.100, Web Server Port = 8001

* CAM 2 : LAN IP Address = 172.16.0.101, Web Server Port = 8002

* CAM 3 : LAN IP Address = 172.16.0.102, Web Server Port = 8003

b. Go to 'Port Forwarding' set up menu in the 'IP Sharing Router' and do as followed. Select 'TCP' port and input relevant IP Address for each. Connecting theory is shown in the picture in right.

c. When trying to connect from external network, you can connect by 'Public IP Address:Port Number', according to each 'Port Number' automatically gets connected to internal IP Address set up in the VIDEO SERVER (2 CHANNEL). That is being converted to 'LAN IP Address:Port Number' to connect.

17) When 'IP Sharing Router' set up is completed, connect to the VIDEO SERVER (2 CHANNEL) and change fixed 'Network Set up' and 'Web Server Port'.

18) By using 'Link 1' method in the computer, connect to the VIDEO SERVER (2 CHANNEL) and change network set up to suit 'Internal Network (LAN)' condition. Set network type to 'Static IP' and input IP Address of 'IP Sharing Router' for Gateway.

WAN IP Address, using Cable Modem, is dynamic. Therefore you need to put in 'Dynamic DNS Server' address for dynamic IP support.

19) Example above inputs these data.

* CAM 1 : IP Address = 172.16.0.101, Subnet Mask = 255.255.255.0, Gateway = 172.16.0.1, Web Server Port = 8001

* CAM 2 : IP Address = 172.16.0.102, Subnet Mask = 255.255.255.0, Gateway = 172.16.0.1, Web Server Port = 8002

* CAM 3 : IP Address = 172.16.0.103, Subnet Mask = 255.255.255.0, Gateway = 172.16.0.1, Web Server Port = 8003

Go to the VIDEO SERVER 'Admin Setting Mode', click 'Network Configuration' to change 'Network Set up' data.

Go to the VIDEO SERVER 'Admin Setting Mode', click 'System Configuration' to change 'Web Server Port'.

| Common Part | |
|----------------------|---------------------------------|
| DNS Server 1 | 210 . 117 . 65 . 1 |
| DNS Server 2 | |
| SMTP(email) Server | smtp.krline.net |
| Dynamic DNS Server 1 | ns.wisecam.co.kr |
| Dynamic DNS Server 2 | |
| Dial In | <input type="checkbox"/> Enable |
| NetworkType | Static IP |

| Static IP | |
|-------------|---------------------|
| IP Address | 17 . 16 . 0 . 101 |
| Subnet Mask | 255 . 255 . 255 . 0 |
| Gateway | 17 . 16 . 0 . 1 |

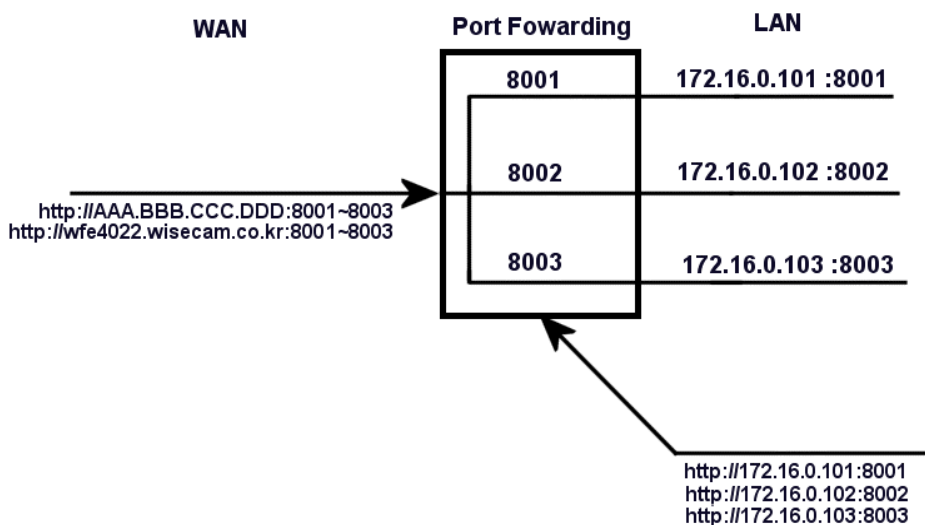
| WebServer Port Setting | |
|------------------------|--------------------------|
| WebServer Port : | 8001 (default port : 80) |

20) Must save after set up change and go to 'System Configuration' to 'Reboot' to apply changed information.

21) To connect from a computer within an internal Network (LAN) to a VIDEO SERVER (2 CHANNEL), use unauthorized 'Internal Network IP Address' and 'Web Server Port'. If you want to connect to CAM 1, use 'http://172.16.0.101:8001'.

Warning! : Cannot connect by 'w?????.wisecam.co.kr:Port Number' in the internal network.

22) To connect from a computer within an external Network (WAN) to a VIDEO SERVER, use 'w?????.wisecam.co.kr: Web Server Port' , which is given by fixed domain service from 'Dynamic DNS' server. '?????' refers to MAC Address of a VIDEO SERVER. When viewed from external network, any MAC Address can be applied to any VIDEO SERVER; simply the 'Port Number' makes distinction.



2. Caution

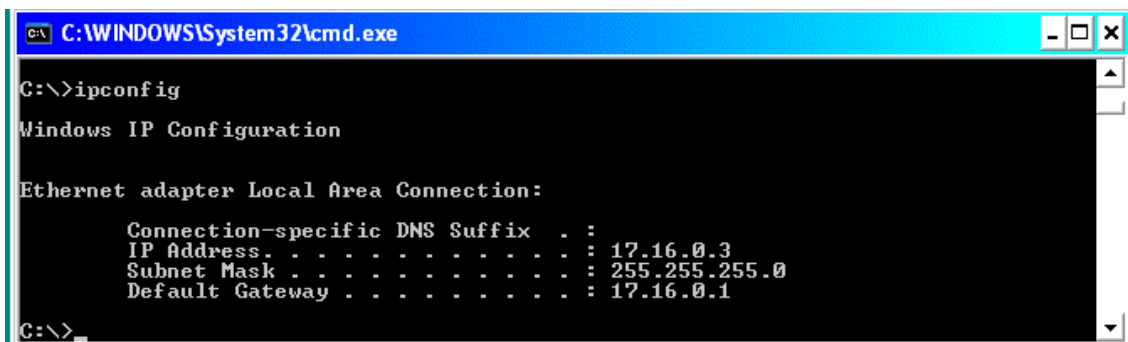
- 1) 'IP Sharing Router' must have 'Port Forwarding' function. (IP Sharing Program must have 'Port Forwarding' also.)
- 2) Learn the instructions first; every 'IP Sharing Router' product has different set up procedures and Unauthorized IP region of LAN.
- 3) If computer Ethernet cannot be connected through 'IP Sharing Router', contact 'IP Sharing Router' ISP (Internet Service Provider).
- 4) If you 'Reset' the 'IP Sharing Router', all the information gets erased. Check everything again from the beginning.

1-3-7 Link 7 : Use xDSL Modem & IP Sharing Router to connect to Ethernet

- Picture of a connection between xDSL Modem & 'IP Sharing Router' to a VIDEO SERVER (2 CHANNEL). With only one authorized IP Address, you can connect to several internal VIDEO SERVERS individually. You can classify each VIDEO SERVER (2 CHANNEL) by its own port through 'Port Forwarding' process of 'IP Sharing Router'.
- VIDEO SERVER (2 CHANNEL) Network Set up Procedure
Connect like the picture and connect to 'IP Sharing Router', complete 'Internet Connect Set up' to use internet in the computer. 'Ethernet Hub', use method of 'Link 1' to connect to the VIDEO SERVER (2 CHANNEL), connects computer and VIDEO SERVER (2 CHANNEL) each other.

1. How to set up

- 1) Connect all the equipment like the picture above.
- 2) First go to 'IP Sharing Router' and select 'xDSL Modem' to connect Ethernet.
- 3) Connect and set up by referring to 'IP Sharing Router' manual.
- 4) In the beginning, connection is possible when set information of computer (which will be connected to 'IP Sharing Router') 'TCP/IP' is selected to 'Automatically Receive IP Address'. After connecting, check the condition of given 'Internal Network (LAN)' and take notes.
- 5) To find out the automatically received 'IP Address', input '# ipconfig' at the 'Command prompt window', then you will see the address.



```
C:\WINDOWS\System32\cmd.exe
C:\>ipconfig

Windows IP Configuration

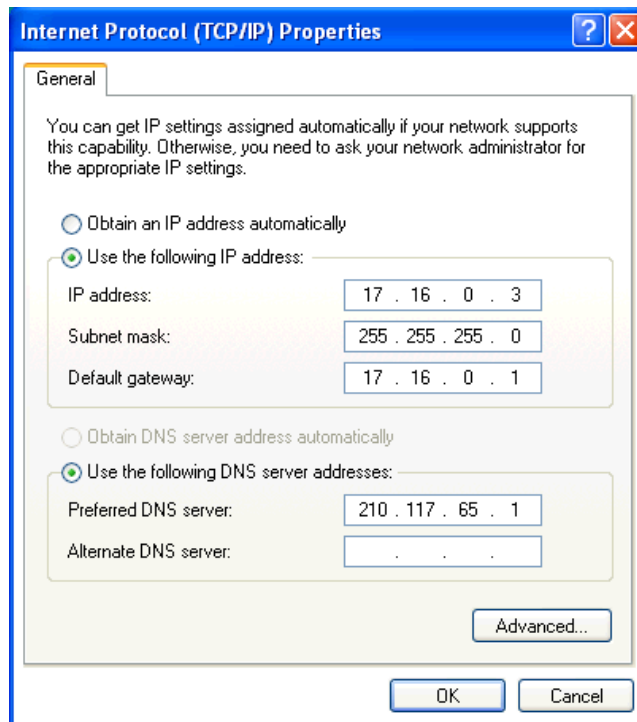
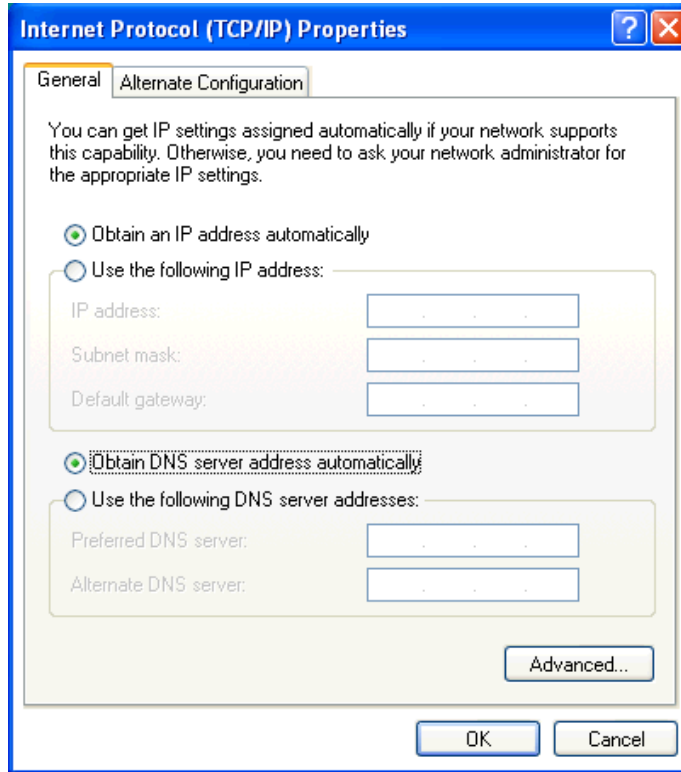
Ethernet adapter Local Area Connection:

    Connection-specific DNS Suffix  . : 
    IP Address . . . . . : 172.16.0.3
    Subnet Mask . . . . . : 255.255.255.0
    Default Gateway . . . . . : 172.16.0.1

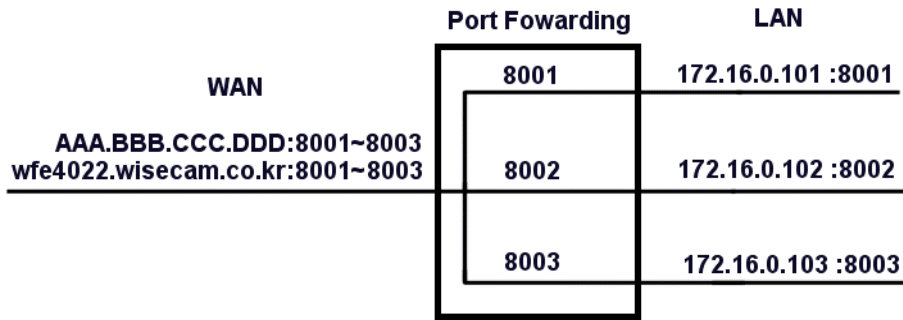
C:\>
```

e.g.) IP Address '172.16.0.3', Subnet Mask '255.255.255.0', Gateway '172.16.0.1'
Input above network address at 'Use Next IP Address' to use.

- 6) Go to 'TCP/IP' again and select 'Use Next IP Address', then input above information to use. Set up computer to 'Static IP Address' is to fix VIDEO SERVER (2 CHANNEL) IP Address that set up in Internal Network (LAN).



- 7) Connect to 'IP Sharing Router' and set up for the connection with 'xDSL Modem'.
- 8) Use 'Gateway' address to input connecting address of 'IP Sharing Router'. E.g.)
'http://172.16.0.1'
- 9) After connecting to 'IP Sharing Router', select network type of 'WAN' to 'PPPoE'
(With 'xDSL Modem')
- 10) Do not use 'DHCP Server', which is offered for equipment needed in a connection
between the inward of 'IP Sharing Router' and 'Internal Network (LAN)'.
- 11) Save all the changed information of 'IP Sharing Router' and 'Reboot' to apply.
- 12) Check for the connectivity of Internet by web browser in the computer.
- 13) If Ethernet connection has no problem with computer, set up of 'IP Sharing
Router' and 'xDSL Modem' has no trouble.
- 14) If Ethernet connection has some problem with computer, contact ISP (Internet
Service Provider) and 'IP Sharing Router' company for the detail. Contact network
type of xDSL modem to ISP (Internet Service Provider) and contact distributor for
'IP Sharing Router' usage.
- 15) Need to set up 'Port Forwarding' to connect from external Network (WAN) to
internal Network (LAN) VIDEO SERVER.
- 16) Refer to 'IP Sharing Router' manual when setting 'Port Forwarding'.
e.g.)
 - a. If there are three VIDEO SERVERs to set up in the internal Network (LAN),
decide which 'Internal IP Address' and 'Web Server Port' to input. Computer
IP Address is 172.16.0.3 therefore '172.16.0.XXX' becomes LAN IP Address
region as below.
 - * CAM 1 : LAN IP Address = 172.16.0.100, Web Server Port = 8001
 - * CAM 2 : LAN IP Address = 172.16.0.101, Web Server Port = 8002
 - * CAM 3 : LAN IP Address = 172.16.0.102, Web Server Port = 8003
 - b. Go to 'Port Forwarding' set up menu in the 'IP Sharing Router' and do as
followed. Select 'TCP' port and input relevant IP Address for each.
Connecting theory is shown in the picture in right.
 - c. When trying to connect from outward, you can connect by 'Public IP
Address: Port Number', according to each 'Port Number' automatically gets
connected to internal IP Address set up in the VIDEO SERVER
(2 CHANNEL). That is being converted to 'LAN IP Address: Port Number' to
connect.



17) When 'IP Sharing Router' set up is completed, connect to the VIDEO SERVER (2 CHANNEL) and change fixed 'Network Set up' and 'Web Server Port'.

18) By using 'Link 1' method in the computer, connect to the VIDEO SERVER (2 CHANNEL) and change network set up to suit 'Internal Network (LAN)' condition. Set network type to 'Static IP' and input IP Address of 'IP Sharing Router' for Gateway. WAN IP Address, using xDSL Modem, is dynamic. Therefore you need to put in 'Dynamic DNS Server' address for dynamic IP support.

19) Example above inputs these data.

* CAM 1 : IP Address = 172.16.0.101, Subnet Mask = 255.255.255.0, Gateway = 172.16.0.1, Web Server Port = 8001

* CAM 2 : IP Address = 172.16.0.102, Subnet Mask = 255.255.255.0, Gateway = 172.16.0.1, Web Server Port = 8002

* CAM 3 : IP Address = 172.16.0.103, Subnet Mask = 255.255.255.0, Gateway = 172.16.0.1, Web Server Port = 8003

Go to the VIDEO SERVER 'Admin Setting Mode', click 'Network Configuration' to change 'Network Set up' data. Go to the VIDEO SERVER (2 CHANNEL) 'Admin Setting Mode', click 'System Configuration' to change 'Web Server Port'.

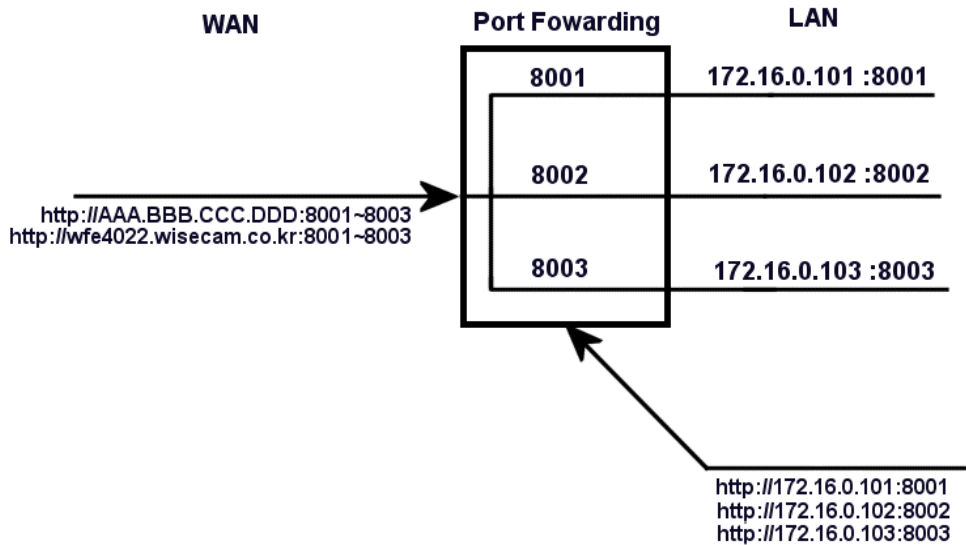
20) Must save after set up change and go to 'System Configuration' to 'Reboot' to apply changed information.

21) To connect from a computer within an internal Network (LAN) to a VIDEO SERVER (2 CHANNEL), use unauthorized 'Internal Network IP Address' and 'Web Server Port'. If you want to connect to CAM 1, use 'http://172.16.0.101.8001'.

Warning! : Cannot connect by 'w??????.wisecam.co.kr:Port Number' in the internal network.

22) To connect from a computer within an external Network (WAN) to a VIDEO SERVER, use 'w??????.wisecam.co.kr:Web Server Port', which is given by fixed domain service from 'Dynamic DNS' server. '???????' refers to MAC Address of a VIDEO SERVER (2 CHANNEL). When viewed from outward, any MAC Address

can be applied to any VIDEO SERVER (2 CHANNEL), simply the 'Port Number' makes distinction.

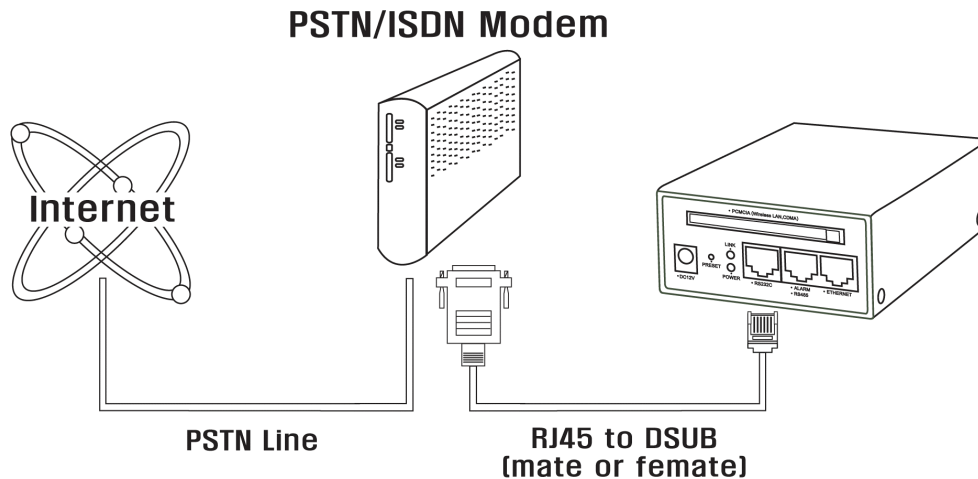


3. Caution

- 1) 'IP Sharing Router' must have 'Port Forwarding' function same as to set up computer joint program to use.
- 2) Learn the instructions first, every 'IP Sharing Router' product has different set up procedures and Unauthorized IP region of LAN.
- 3) If computer Ethernet cannot be connected through 'IP Sharing Router', contact 'IP Sharing Router' ISP (Internet Service Provider).
- 4) If you 'Reset' the 'IP Sharing Router', all the information gets erased. Check everything again from the beginning.

1-3-8 Link 8 : Connect Ethernet through Telephone Modem (PSTN)

- Picture of a connection between Telephone Modem (PSTN) and VIDEO SERVER, way to connect Ethernet by telephone modem (PSTN).



- **VIDEO SERVER Network Set up Procedure**

Like 'Link 1' or 'Link 2', connect computer with VIDEO SERVER (2 CHANNEL) and change VIDEO SERVER (2 CHANNEL) network set up then connect to Telephone Modem (PSTN).

1. How to set up

- 1) Use method of 'Link 1' or 'Link 2' to connect to VIDEO SERVER (2 CHANNEL) and move to 'Admin Setting Mode'.
- 2) Select 'Network Configuration' in 'Admin Setting Mode' menu.
- 3) Input 'Common Part' section first. (Common form of each network)
- 4) Set 'Network Type' to 'PPP'. (Telephone Modem)
- 5) You must input 'Dynamic DNS Server' (ns.wisecam.co.kr) Address. ('PPP' lets VIDEO SERVER get flowing IP Address)
- 6) Input 'DNS Server' to apply Domain Name (On 'Dynamic DNS Server' section) and contact ISP (Internet Service Provider) for the address.
- 7) In case of an alarm, to send captured images by E-mail, input 'Sending Mail Server Address' in the 'SMTP Server' address section.
- 8) Input 'Phone Number', 'User's ID', and 'Password' to connect through 'PPP'.
- 9) Set up the connection time as followed. When using a Telephone Modem (PSTN), they charge you in addition to flat rate. If 'Operation Type' is set 'Always', modem is connected at all times, so it can be a burden on data communication bill. However,

you can save Telephone modem (PSTN) connecting fee by setting 'Operation Type' to 'Only Alarm'. Then FTP server or E- mail only connects a modem when alarm happened to send captured images.

10) Go to 'Network Configuration' of VIDEO SERVER (2 CHANNEL) and click 'OK'.

| Common Part | |
|----------------------|---------------------------------|
| DNS Server 1 | 168 . 126 . 62 . 1 |
| DNS Server 2 | 168 . 126 . 62 . 2 |
| SMTP(email) Server | smtp.krline.net |
| Dynamic DNS Server 1 | ns.wisecam.co.kr |
| Dynamic DNS Server 2 | |
| Dial In | <input type="checkbox"/> Enable |
| NetworkType | PPP |

| PPP | |
|------------------|-----------------|
| PPP Type | DialOut_Default |
| Operation Type | always |
| Phone Number. | 01414 |
| User Name | wcam |
| User Password | ●●● |
| Confirm Password | ●●● |
| Init Command | |

11) Click 'Save' to store changed information.

12) Move to 'System Configuration' and click 'Reboot' to apply changed set up information.

13) Connect a VIDEO SERVER (2 CHANNEL) and 'Telephone Modem (PSTN)' like the 'Picture' above and connect from outward to check the connectivity. Connect to 'http://wfe4022.wisecam.co.kr' when MAC Address of a VIDEO SERVER (2 CHANNEL) is '00-30-ba-fe-40-22'.

14) These can be done when external network connection to 'VIDEO SERVER (2 CHANNEL) Web Server' is not in order. (Internet is connected)

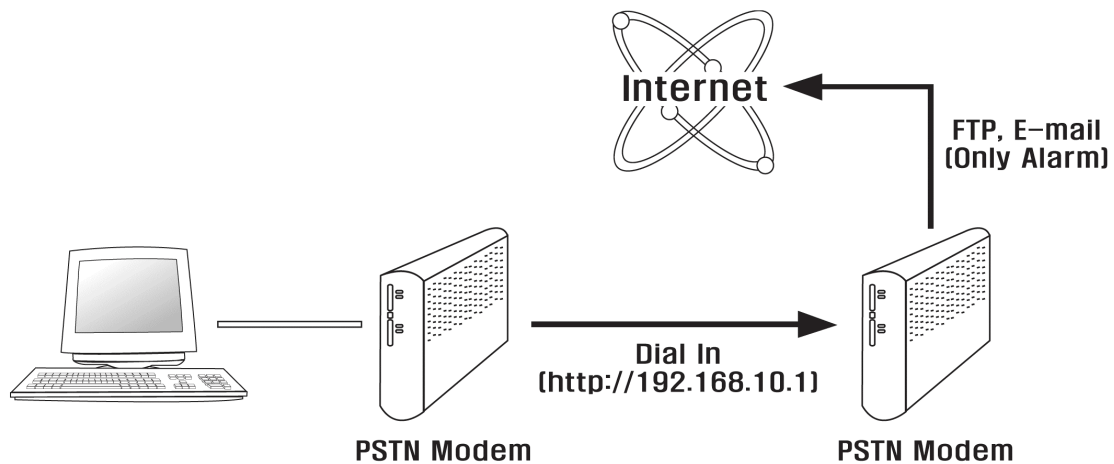
a. Web Server Port of VIDEO SERVER (2 CHANNEL) is normally set up to # '80', but ISP (Internet Service Provider) might have closed that port by force. Change Web Server Port to above # '1024' and reset. First, connect computer with VIDEO SERVER (2 CHANNEL), go to 'System Security' in 'Admin Setting Mode' menu and input in the 'Web Server Setting' section.

b. If you changed port to '8080', VIDEO SERVER Address becomes 'VIDEO SERVER (2 CHANNEL) IP Address: Port Number'.

e.g.) 'http://wfe4022.wisecam.co.kr:8080'

1-3-9 Link 9 : Remote Dial In Method to Telephone Modem (PSTN)

- Way to connect remotely only when you want to connect, by dialing in to a VIDEO SERVER (2 CHANNEL) from computer with Telephone Modem (PSTN).



● VIDEO SERVER Network Set up Procedure

Like 'Link 1' or 'Link 2', connect computer with VIDEO SERVER (2 CHANNEL) and change VIDEO SERVER (2 CHANNEL) network set up then connect to Telephone Modem (PSTN).

1. How to set up

- 1) Use method of 'Link 1' or 'Link 2' to connect to VIDEO SERVER (2 CHANNEL) and move to 'Admin Setting Mode'.
- 2) Select 'Network Configuration' in 'Admin Setting Mode' menu.
- 3) Input 'Common Part' section first. (Common form of each network)
- 4) Set 'Network Type' to 'PPP'. (Telephone Modem)
- 5) You must input 'Dynamic DNS Server' (ns.wisecam.co.kr) Address. ('PPP' lets VIDEO SERVER (2 CHANNEL) get dynamic IP Address)
- 6) Input 'DNS Server' to apply Domain Name (On 'Dynamic DNS Server' section) and contact ISP (Internet Service Provider) for the address.
- 7) In case of an alarm, to send captured images by E-mail, input 'Sending Mail Server Address' in the 'SMTP Server' address section.
- 8) Input 'Phone Number', 'User's ID', and 'Password' to connect through 'PPP'.

- 9) Always set up Telephone Modem connection time to 'Only Alarm' in order to use 'Dial In' method to connect from outward. If 'Operation Type' is set 'Always', modem is connected at all times, so cannot connect from outward. If 'Operation Type' is set 'Only Alarm', FTP server or E- mail only connects a modem when alarm happened to send captured images. Therefore, an administrator can log in to see when the modem is not connected.
- 10) Go to 'Network Configuration' of VIDEO SERVER (2 CHANNEL) and click 'OK'.

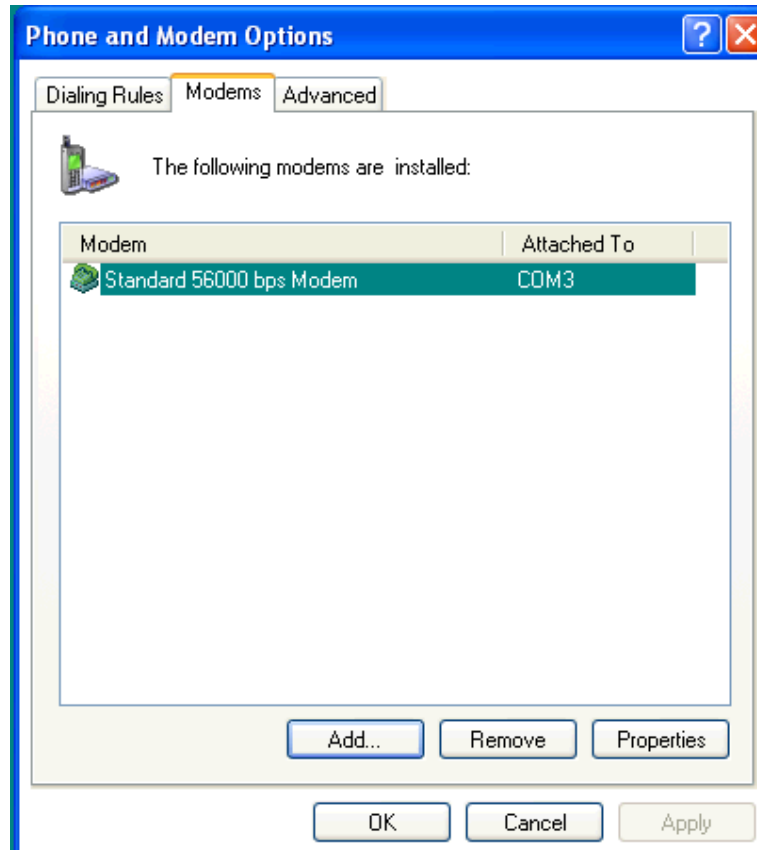
| Common Part | |
|----------------------|---------------------------------|
| DNS Server 1 | 168 . 126 . 62 . 1 |
| DNS Server 2 | 168 . 126 . 62 . 2 |
| SMTP(email) Server | smtp.krline.net |
| Dynamic DNS Server 1 | ns.wisecam.co.kr |
| Dynamic DNS Server 2 | |
| Dial In | <input type="checkbox"/> Enable |
| NetworkType | PPP |

| PPP | |
|------------------|-----------------|
| PPP Type | DialOut_Default |
| Operation Type | only alarm |
| Phone Number. | 01414 |
| User Name | wcam |
| User Password | ●●● |
| Confirm Password | ●●● |
| Init Command | |

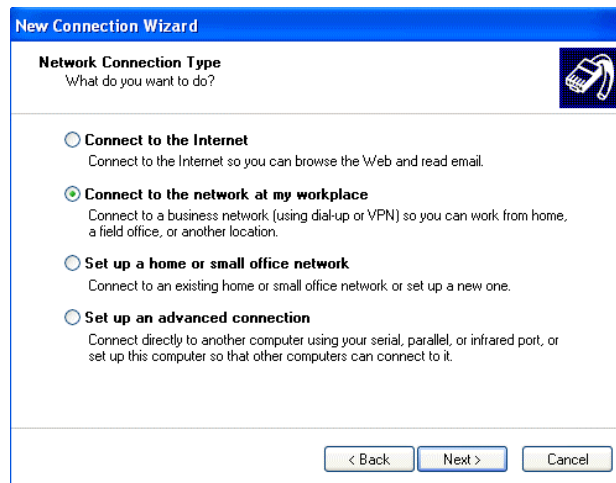
- 11) Click 'Save' to store changed information.
- 12) Move to 'System Configuration' and click 'Reboot' to apply changed set up information.
- 13) Connect a VIDEO SERVER (2 CHANNEL) and 'Telephone Modem (PSTN)' like the 'Picture' above.

2. 'Telephone Connection Network Formation' of the computer

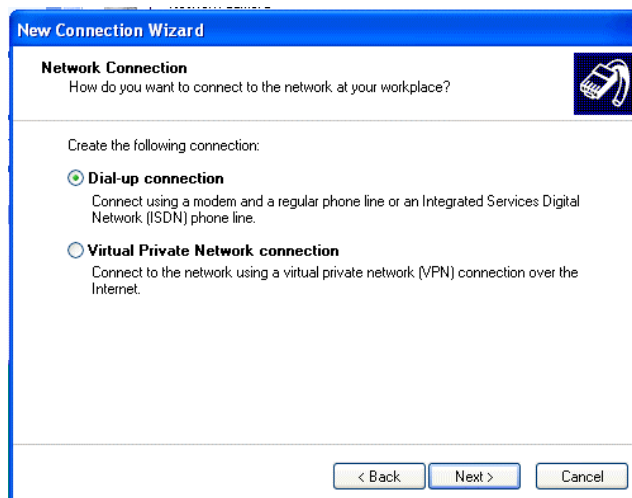
- 1) Set up the computer for 'Dial In' connection.
- 2) Computer must have connected to 'Internal or External Telephone Modem'.
- 3) Click 'Start'-'Control Panel'-'Printer & Hardware'-'Telephone & Modem Option' to check the set up of Modem Driver.

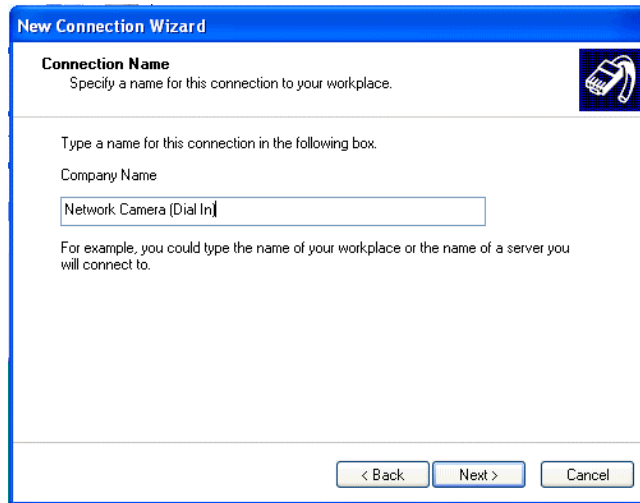


- 4) Move to 'Start'-'Set up'-'Control Panel'-'Network & Internet Connect'-'Network Connect' and click 'Make New Connection'.
- 5) In the explanation of 'Connect to company Network', the word 'Telephone connect' comes out. Select this and click 'Next'.



- 6) Go to 'Network Connect' and select 'Link Telephone connect' and click 'Next', then input 'Connection Name' and click 'Next'.





New Connection Wizard

Connection Name
Specify a name for this connection to your workplace.

Type a name for this connection in the following box.

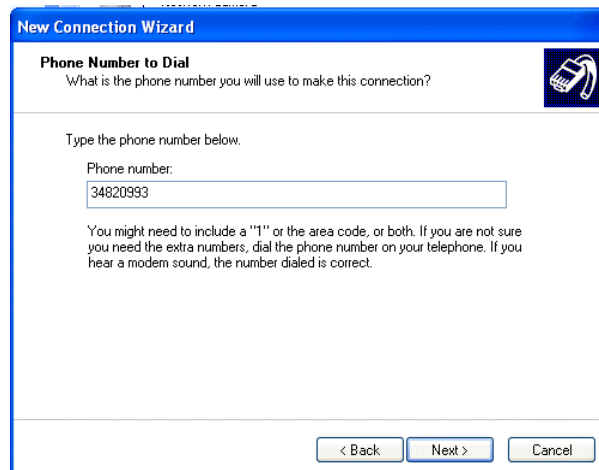
Company Name

Network Camera (Dial In)

For example, you could type the name of your workplace or the name of a server you will connect to.

< Back Next > Cancel

- 7) Input 'Phone Number' of a VIDEO SERVER (2 CHANNEL) in the 'Number to Dial' and click 'Next', to assure new connection set up click 'End'.



New Connection Wizard

Phone Number to Dial
What is the phone number you will use to make this connection?

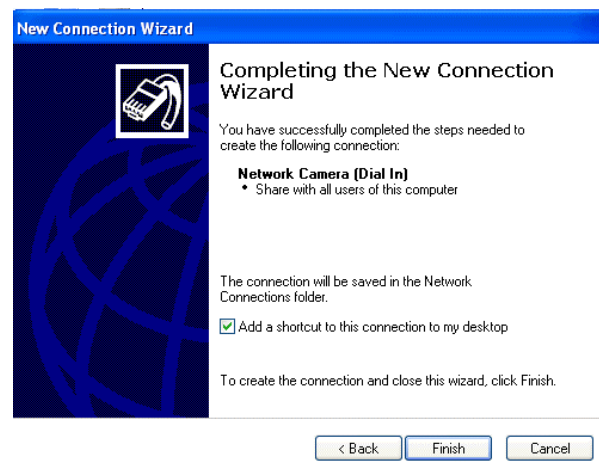
Type the phone number below.

Phone number:

34820993

You might need to include a "1" or the area code, or both. If you are not sure you need the extra numbers, dial the phone number on your telephone. If you hear a modem sound, the number dialed is correct.

< Back Next > Cancel



New Connection Wizard

Completing the New Connection Wizard

You have successfully completed the steps needed to create the following connection:

Network Camera (Dial In)

- Share with all users of this computer

The connection will be saved in the Network Connections folder.

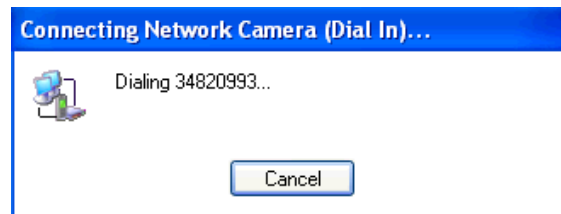
Add a shortcut to this connection to my desktop

To create the connection and close this wizard, click Finish.

< Back Finish Cancel

3. VIDEO SERVER Remote Connection through 'Dial in'

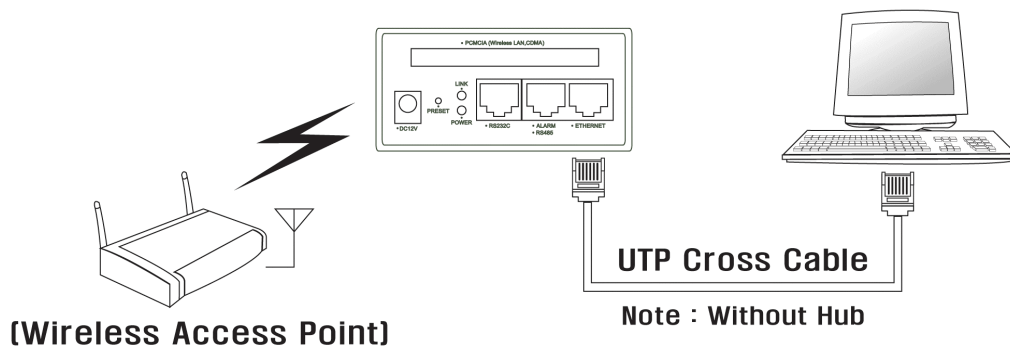
- 1) Click 'Link Name' that is on the main screen, input User Name/Password as 'wcam/wcam', and then click 'Dial'.



- 2) When telephone link is successful, computer is set up by newly connected 'Telephone Connection Network Link'.
- 3) Input Standard Address of VIDEO SERVER (2 CHANNEL) 'Serial Server' 192.168.1.1 on the web browser and log in. (<http://192.168.1.1>) When 'Dial in', connection address becomes '<http://192.168.10.1>'.

1-3-10 Link 10: VIDEO SERVER (2 CHANNEL) with Wireless LAN PC Card (802.11b) to Access Point connection

- 1) Before put Wireless LAN PC Card (802.11b) in VIDEO SERVER (2 CHANNEL), Connect VIDEO SERVER (2 CHANNEL) with the computer on Ethernet by cross LAN cable and log in to the VIDEO SERVER (2 CHANNEL) admin page.



- 2) Go to the 'Network Wireless' Configuration menu

Network Configuration-PCMCIA

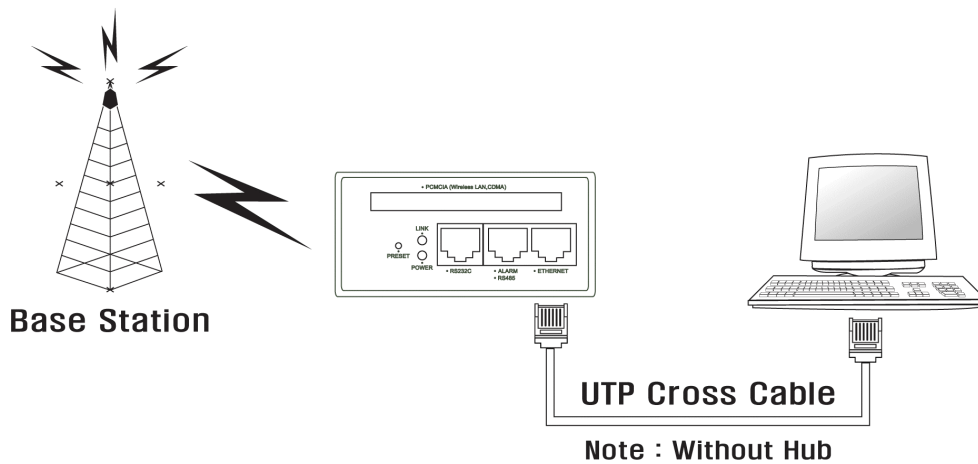
| Common Part | |
|----------------------|--|
| DNS Server 1 | <input type="text" value="210"/> . <input type="text" value="117"/> . <input type="text" value="65"/> . <input type="text" value="1"/> |
| DNS Server 2 | <input type="text"/> . <input type="text"/> . <input type="text"/> . <input type="text"/> |
| SMTP(email) Server | <input type="text"/> |
| Dynamic DNS Server 1 | <input type="text" value="ns.wisecam.co.kr"/> |
| Dynamic DNS Server 2 | <input type="text"/> |
| NetworkType | WirelessLAN ▼ |

| WirelessLAN | |
|----------------|---------------------|
| IP Address | 192 . 168 . 2 . 200 |
| Subnet Mask | 255 . 255 . 255 . 0 |
| Gateway | 192 . 168 . 2 . 1 |
| Operating mode | Infrastructure |
| ESSID | wcam |
| WEP | Disable |
| key 1 | : |
| key 2 | : |
| key 3 | : |
| key 4 | : |
| Default Key | : 1 |

- 3) Select 'Wireless LAN' in the 'Network Type'
- 4) You should put the DNS Server of the ISP
- 5) You should put VIDEO SERVER (2 CHANNEL)'s 'IP Address', 'Subnet Mask, and 'Gateway'.
- 6) VIDEO SERVER (2 CHANNEL)'s Operating mode supports 'Infrastructure mode' only.
- 7) You should put 'ESSID'(Extended Service Set ID) to communicate with AP(Access Point)
- 8) If you wish to use better security function, You should select 'WEP'(Wired Equivalent Privacy)'s menu.
- 9) If selected 'WEP's menu '64bit' or '128bit', you should put 'key1~key 4's values and select 'Default Key'. They are not created automatically.
- 10) If selected 'WEP's menu 'Disable', you should not put 'key1~key 4's values and don't select 'Default Key'
- 11) Go to 'System Configuration' and click the 'Reboot' button to save new configuration. Then insert Wireless LAN PC Card (802.11b) in VIDEO SERVER (2 CHANNEL).
- 12) You can find compatible Wireless LAN PC Card (802.11b) list at our web site.

1-3-11 Link 11: VIDEO SERVER (2 CHANNEL) with CDMA Wireless Network Card

- 1) Before put CDMA Wireless Network Card in VIDEO SERVER (2 CHANNEL), Connect VIDEO SERVER (2 CHANNEL) with the computer on Ethernet by cross LAN cable and log in to the VIDEO SERVER (2 CHANNEL) admin page.



- 2) Go to the Network Configuration menu

Network Configuration-PCMCIA

| Common Part | |
|----------------------|--------------------|
| DNS Server 1 | 210 . 117 . 65 . 1 |
| DNS Server 2 | |
| SMTP(email) Server | |
| Dynamic DNS Server 1 | ns.wisecam.co.kr |
| Dynamic DNS Server 2 | |
| NetworkType | CDMA |

| CDMA | |
|------------------|-----------|
| CDMA Type | Default ▾ |
| Operation Type | always ▾ |
| Phone Number | 01414 |
| User Name | wcam |
| User Password | •••• |
| Confirm Password | •••• |
| Init Command | |

- 3) Select 'CDMA' in the 'Network Type'
- 4) Since 'CDMA' is a dynamic IP, Please put 'Dynamic DNS Server' and use the DDNS service.
- 5) 'DDNS' service example
'Dynamic DNS Server' address : ns.wisecam.co.kr,
MAC address of VIDEO SERVER (2 CHANNEL) : 00-30-ba-fe-40-12
Static domain address of the VIDEO SERVER (2 CHANNEL) :
wfe4012.wisecam.co.kr
- 6) To use 'Dynamic DNS Server', you should put the DNS Server of the ISP
- 7) You should put ISP(Internet Service Provider)'s phone number.
- 8) You should put ID and password given from ISP to connect internet.
- 9) Select 'Operation Type', 'always' or 'only alarm'
- 10) After your network setting, please click the 'Save' button.
- 11) Go to 'System Configuration' and click the 'Reboot' button to save new configuration. Then insert CDMA Wireless Network Card in VIDEO SERVER (2 CHANNEL).