



- -

1.	.....	3
1)	가 .....	3
2)	.....	4
3)	.....	5
4)	.....	5
2.	.....	6
1)	.....	6
2)	.....	12
3)	.....	13
3.	.....	20
1)	.....	20
2)	.....	21
4.	A/S .....	22
1)	.....	22
2)	.....	23



2)



SERVER

NETWORK



, Static IP PPPoE(xDSL), DHCP(Cable Modem),  
PPP(ISDN, PSTN Modem) 가



CMOS

VGA CMOS , 640x480



, 4  
1 가 . 1  
Relay Out , Normal Open (N.O) , Normal Close (N.C)



가 , , 25



FTP

가 FTP



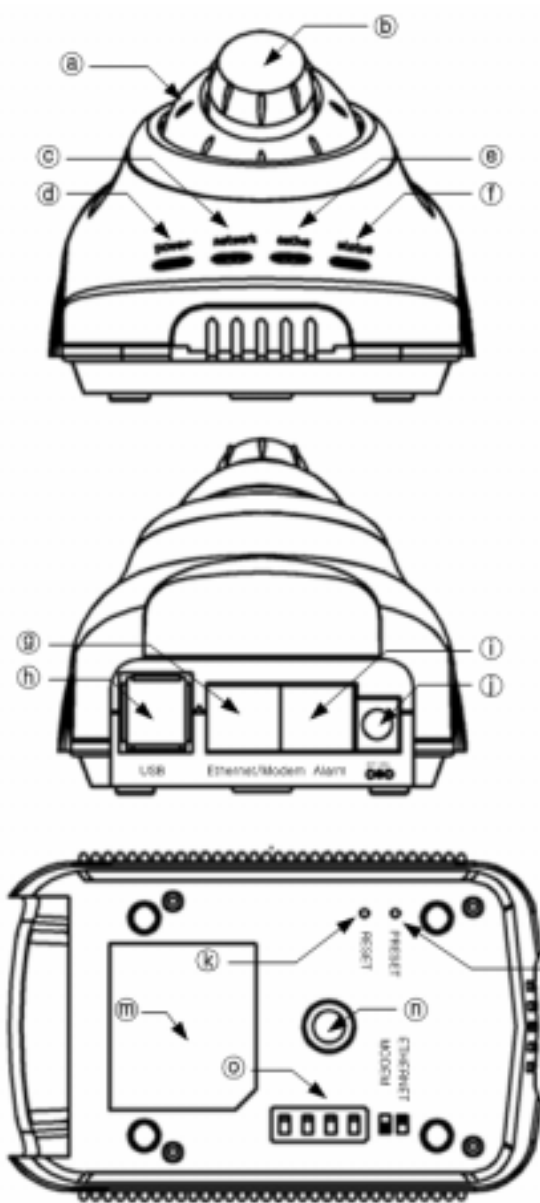
가 가

3)

- Box
- 1
- UTP 1
- UTP 1
- 1
- 1
- CD 1 ( )

4)

- 



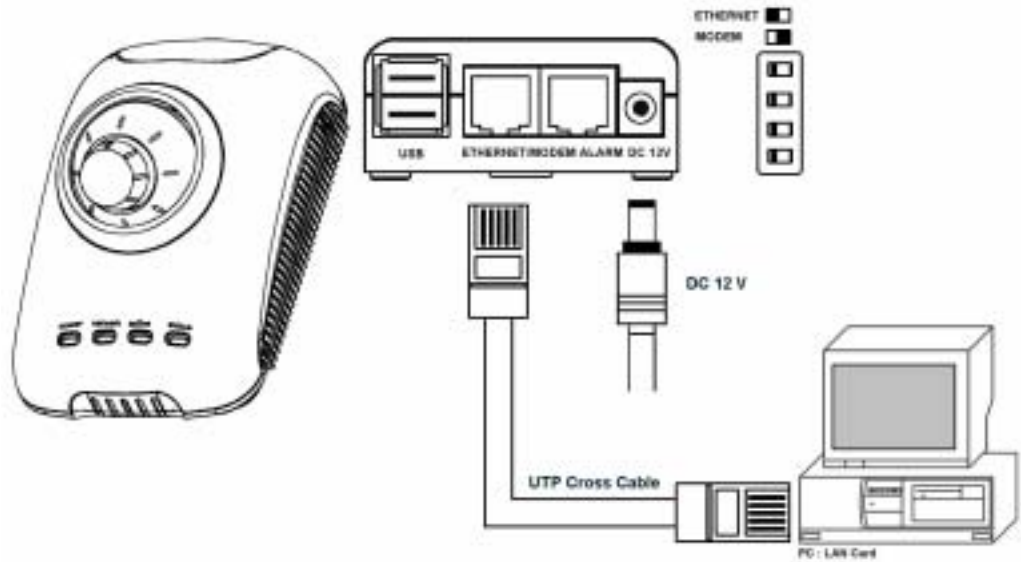
The diagram illustrates the device from three perspectives: front, rear, and bottom. Callouts a through t identify various features and ports.

- Ⓐ - 렌즈 볼(좌우상하 회전 가능)
- Ⓑ - 렌즈 (초점 조절)
- Ⓒ - Network 연결 표시 LED
- Ⓓ - Power 연결 표시 LED
- Ⓔ - Network 동작 표시 LED
- Ⓕ - Camera 동작 표시 LED
- Ⓖ - Ethernet/PSTN 모뎀 연결
- Ⓗ - USB Slave Device 연결
- Ⓛ - 외부 Alarm Device 연결
- Ⓜ - DC Power 입력 (12VDC)
- Ⓚ - 시스템 재부팅 기능
- Ⓛ - 시스템 복구/초기화 기능
- Ⓝ - 브라켓 연결 홈
- Ⓜ - 제품 상표 등록 정보 표시
- Ⓟ - Ethernet/PSTN 모뎀 연결 전환

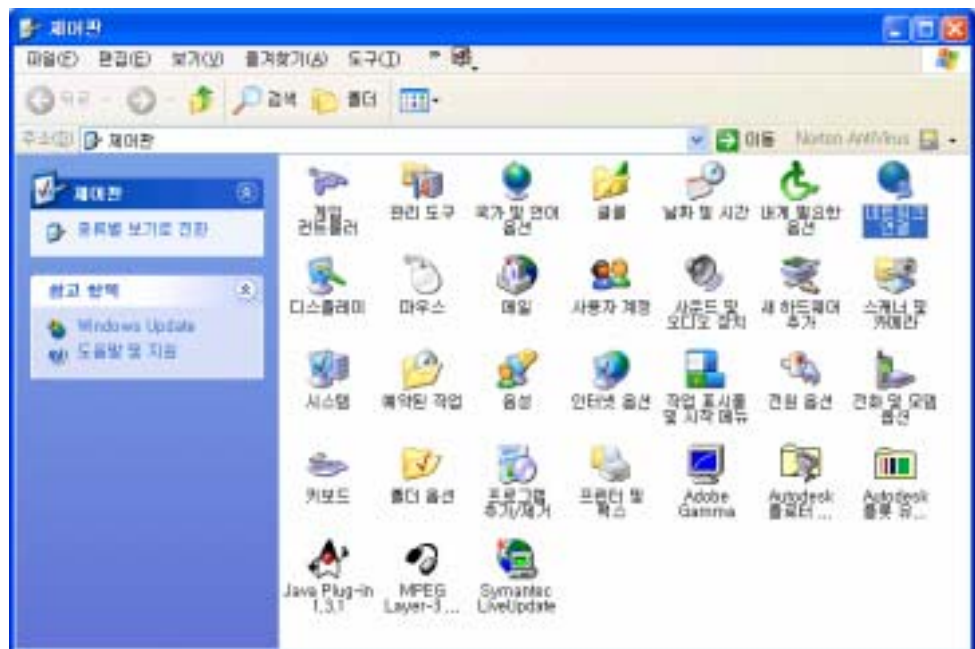
2.

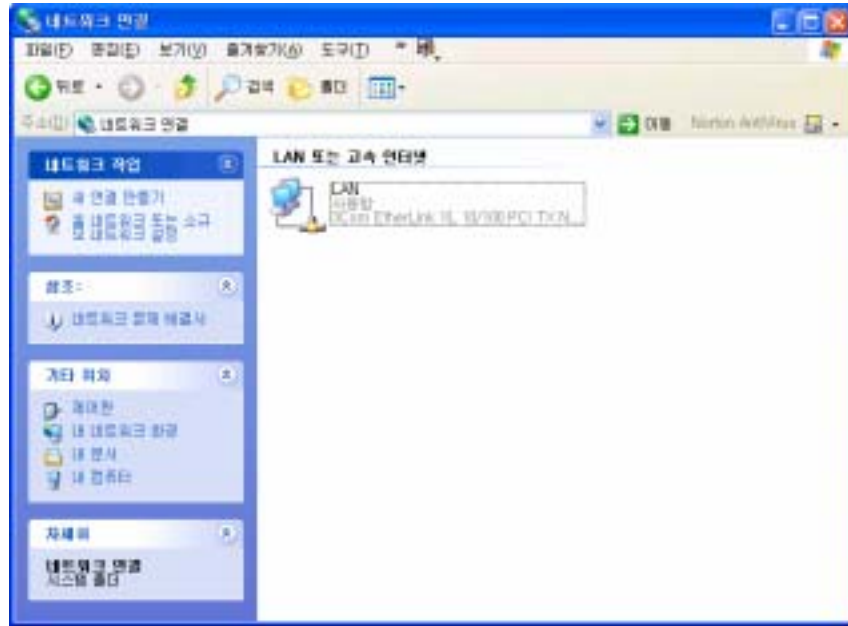
1)

'ETHERNET'

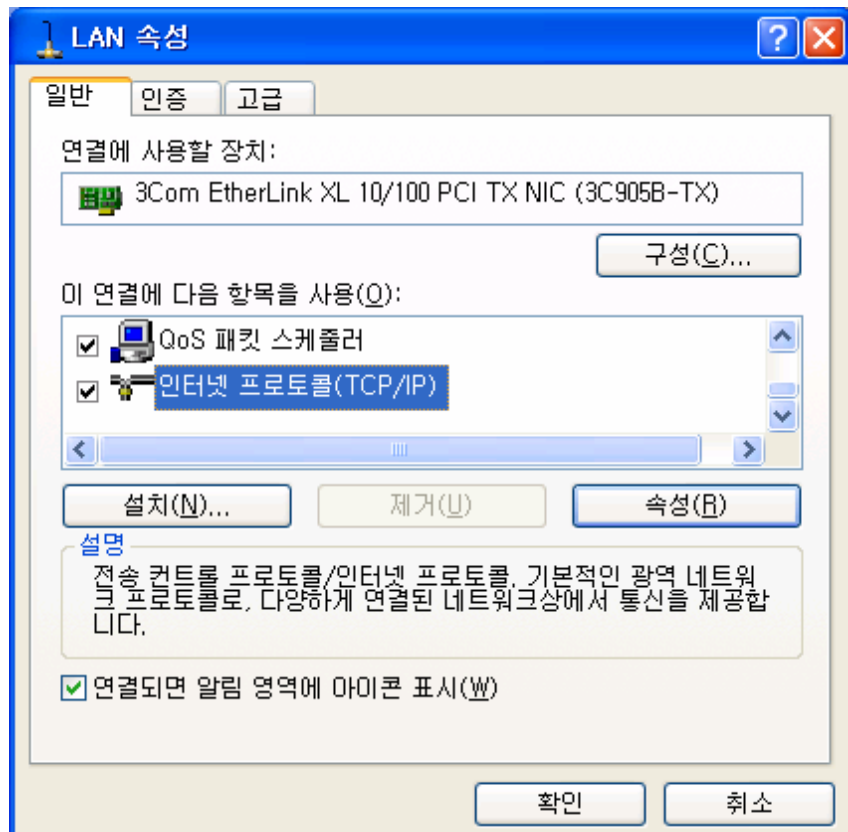


IP

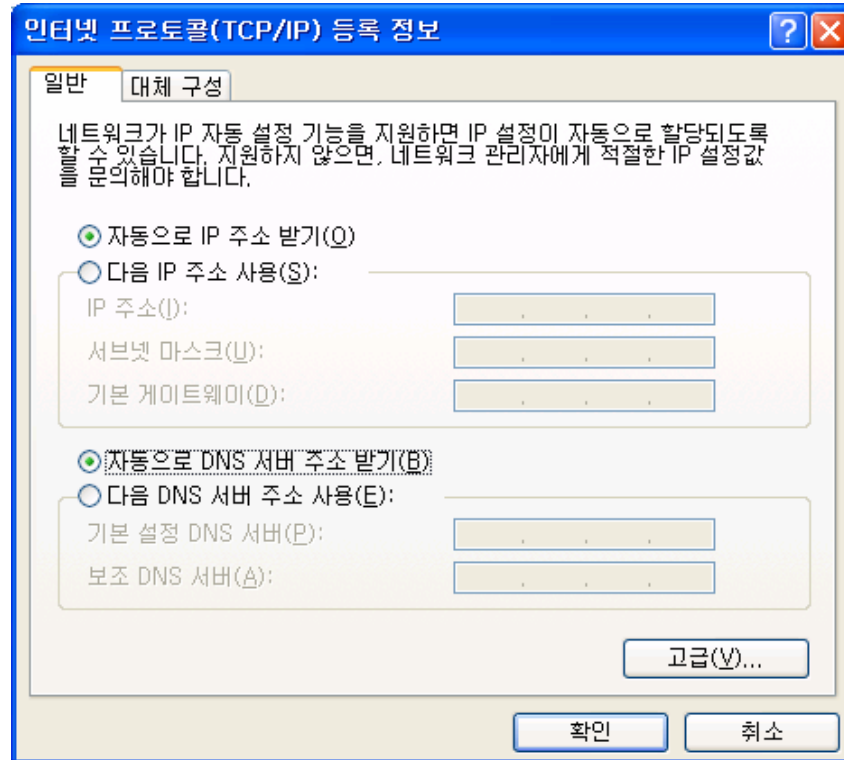




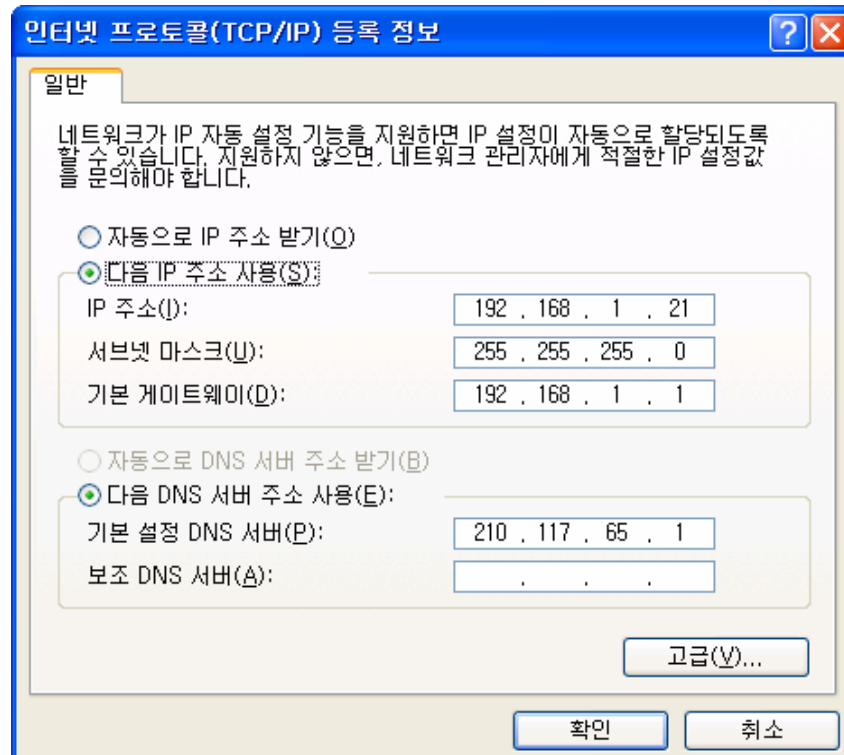
'TCP/IP'



'IP'가



'IP'가 '192.168.1.100'



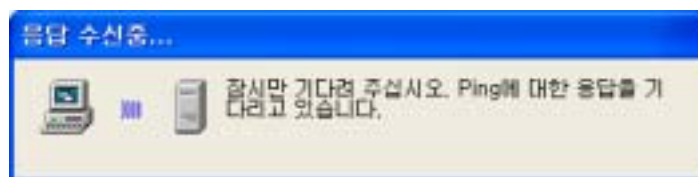
- IP (Netsetup.exe) IP , IP



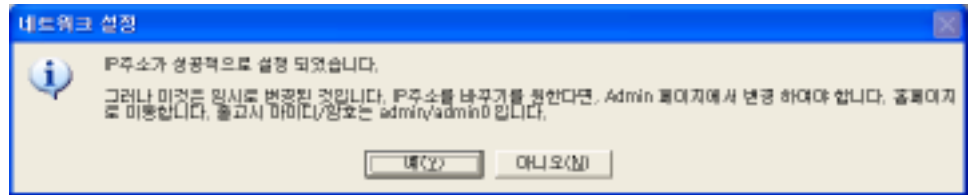
MAC 가 , IP  
) 192.168.1.100



'IP



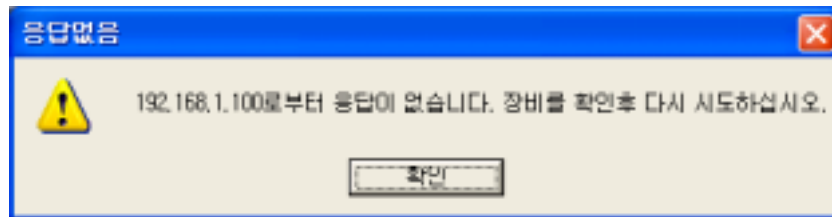
IP 가



IP

MAC

IP



●

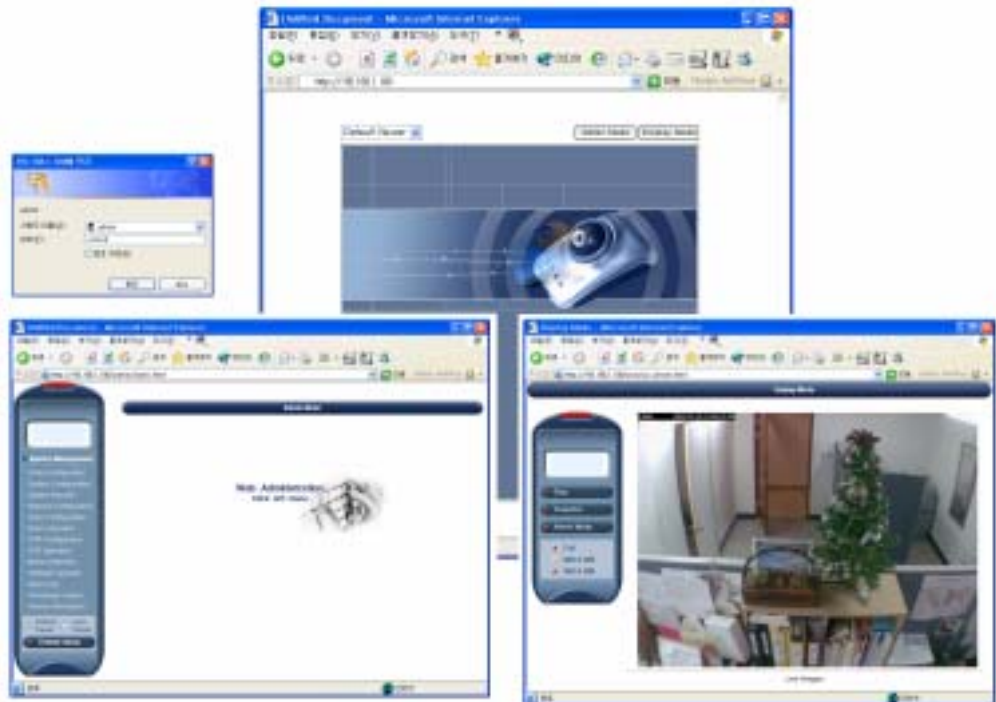
가

'Display Mode'

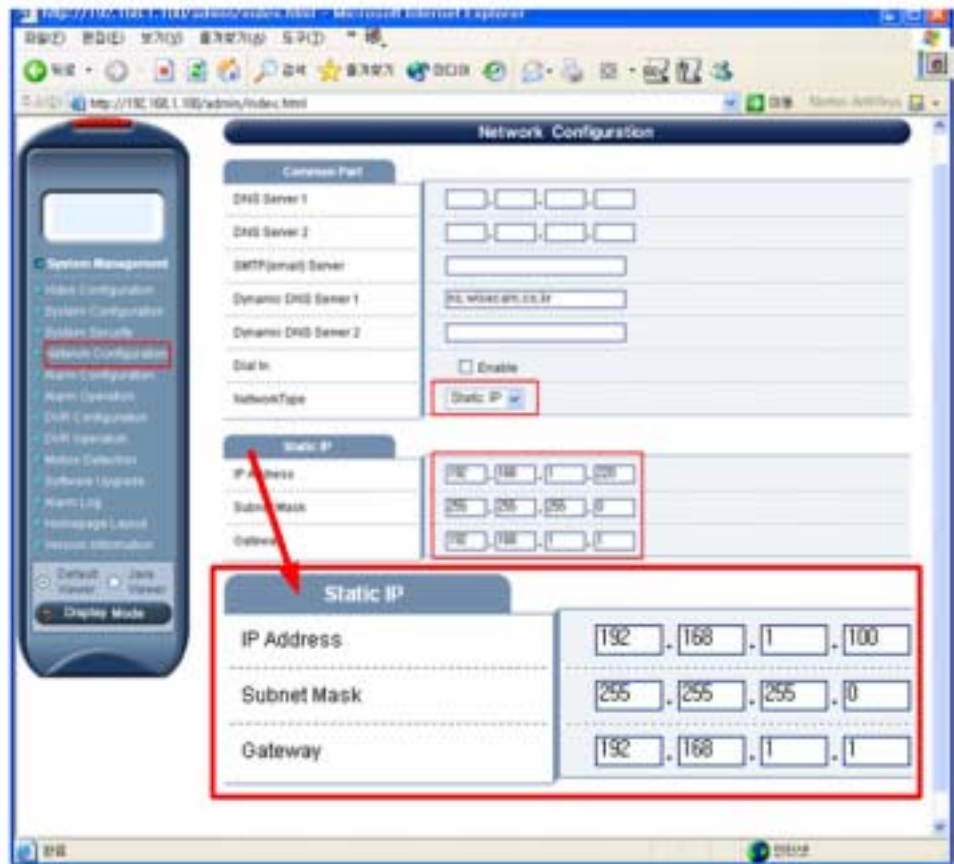
'Admin Mode'

'admin'

'admin0'

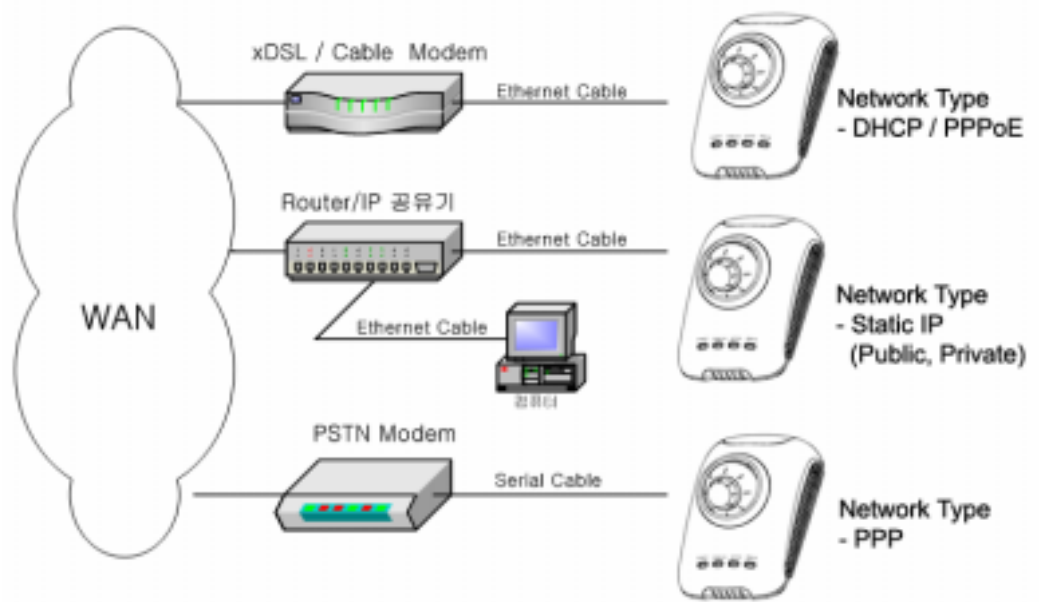


IP  
 가 , IP  
 IP , 'Admin Mode'  
 'System Management' 'Network Configuration'  
 , 'Save'  
 ) IP Address IP 192.168.1.100  
 , Subnet Mask Gateway



2)

- 가
  - Cable 'DHCP'
  - xDSL 'PPPoE'
  - Router IP , IP
  - PSTN 'PPP'



(Network Type)

(ISP)			DNS Server
KT	Megapass ADSL - Premium, Lite	PPPoE	168.126.63.1
	Megapass ADSL - My IP	Static IP	168.126.63.2
	Megapass B&A, BWLL, Ntopia	DHCP	
HTI	ADSL - Dream, Pro, Lite	PPPoE	210.94.0.7
	Cable - Pro, Lite	DHCP	
	E-Valley	DHCP	
Thrunet	Cable - , ,	DHCP	210.117.65.1
	, ,	DHCP	210.117.65.2
	TUT		
ONSE	Sshark ,	DHCP	202.30.143.11
HITEL	PSTN - 01432	PPP	204.252.145.2
Chollian	PSTN - 01421	PPP	164.124.101.2

< ,

>

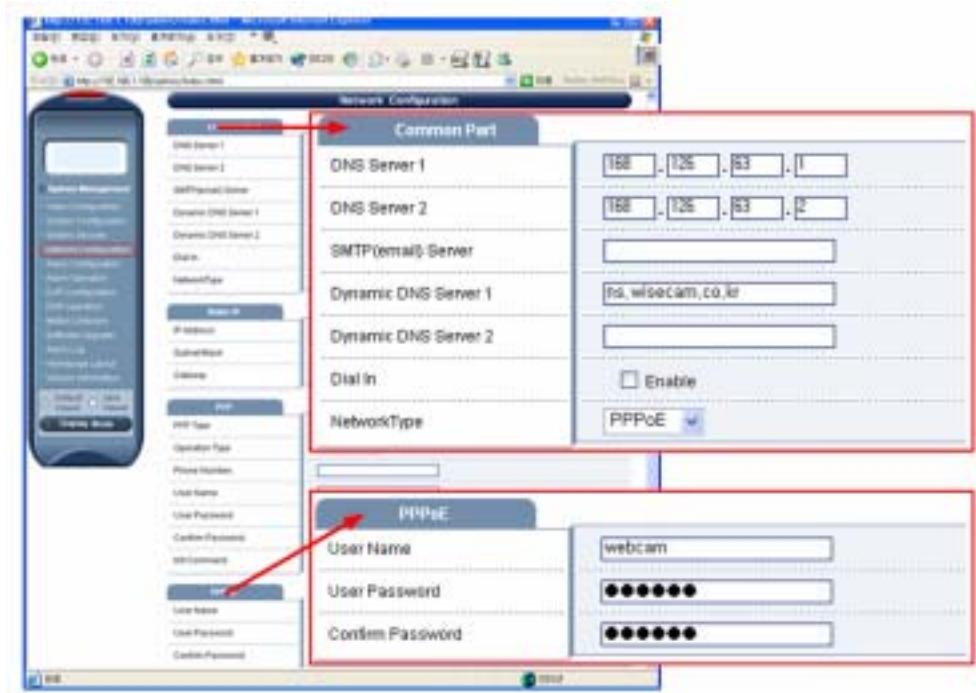
3)

● xDSL

'xDSL

'Admin Mode'

, 'Network Configuration'



'Network Type' 'PPPoE'

'PPPoE' IP 'Dynamic DNS Server'

'DDNS'

'DDNS'

MAC

. (w\_\_\_\_.DDNS Sever )

'DDNS'

'Dynamic DNS Server' : ns.wisecam.co.kr

MAC : 00-30-ba-fe-40-12

Domain : wfe4012.wisecam.co.kr

'Dynamic DNS Server'

'DNS Server'

'xDSL

'Network Type' 'PPPoE'

, 'Save'

'System Configuration'

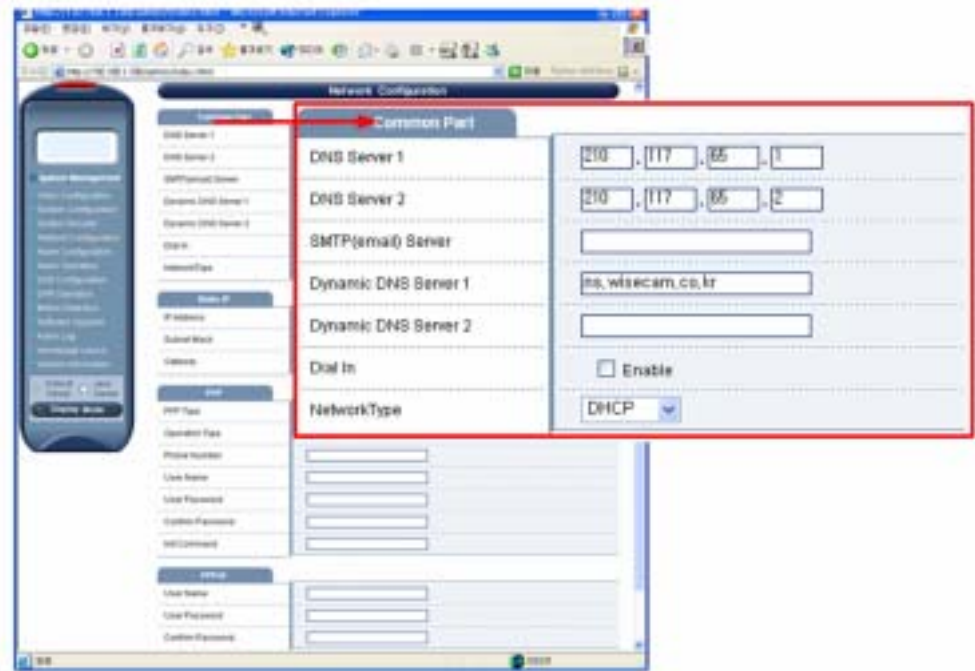
'Reboot'

가

, 'xDSL'

- Cable

'Cable',  
'Admin Mode', 'Network Configuration'



'Network Type' 'DHCP'  
'DHCP' IP 'Dynamic DNS Server'  
'DDNS'  
'DDNS' MAC  
(w\_\_\_\_.DDNS Sever )  
'DDNS'  
'Dynamic DNS Server' : ns.wisecam.co.kr  
MAC : 00-30-ba-fe-40-12  
Domain : wfe4012.wisecam.co.kr  
'Dynamic DNS Server'  
'DNS Server' 가  
'DHCP', DHCP Server  
'Network Type' 'DHCP'  
, 'Save'  
'System Configuration' 'Reboot',  
가 , 'Cable'

● IP

xDSL/Cable

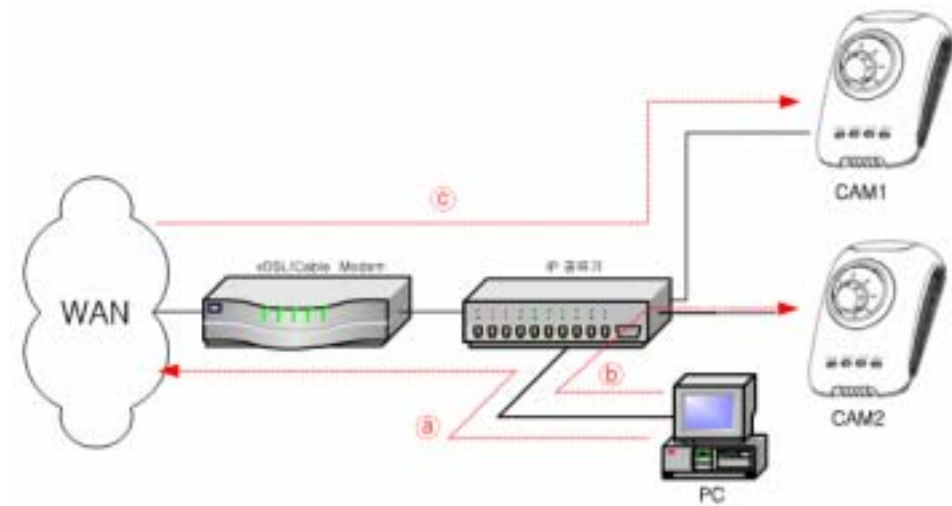
PC

가

IP

‘IP

-> ->



➤

PC , 'IP

➤

PC CAM1 CAM2

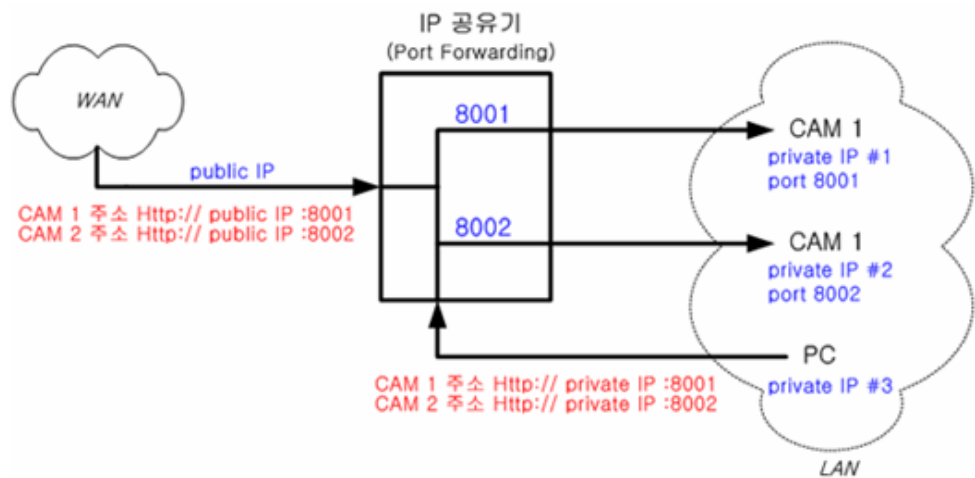
➤

IP

'IP

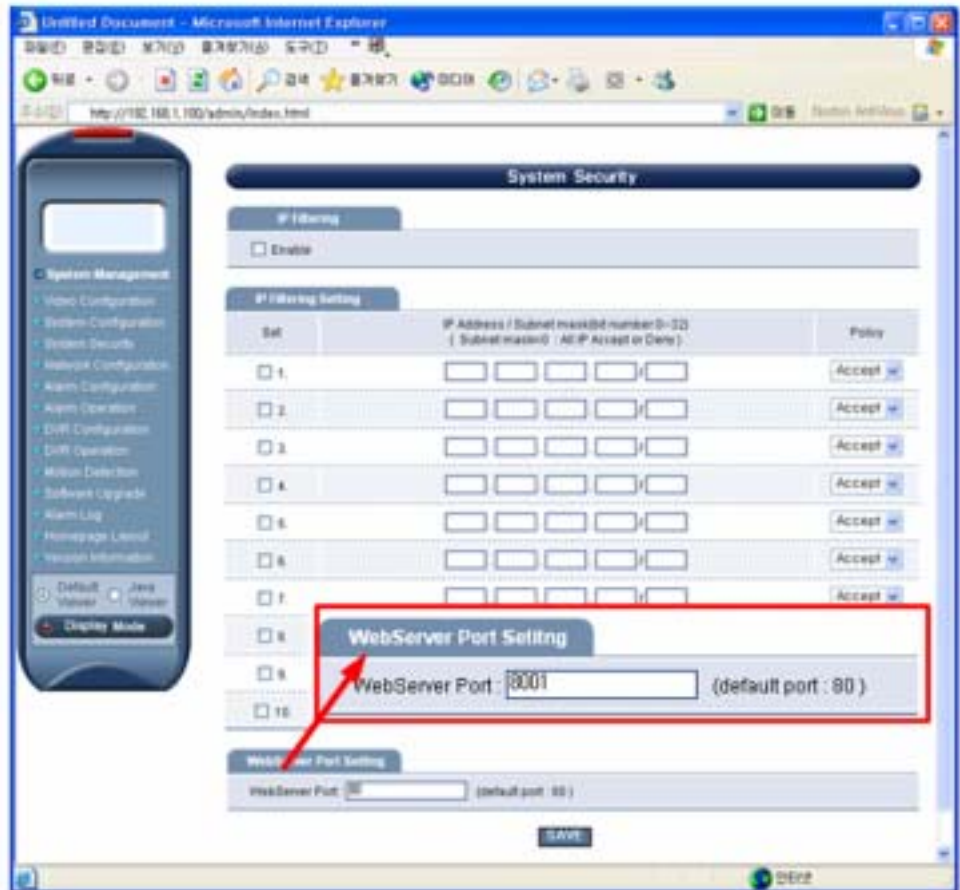
(Port Forwarding)'

(Port Forwarding)'





'IP' 가 'IP', 'System Security', 'Save', 'System Security', 'WebServer Port Setting', 'IP', 'CAM 1' '8001', 'CAM 2' '8002'

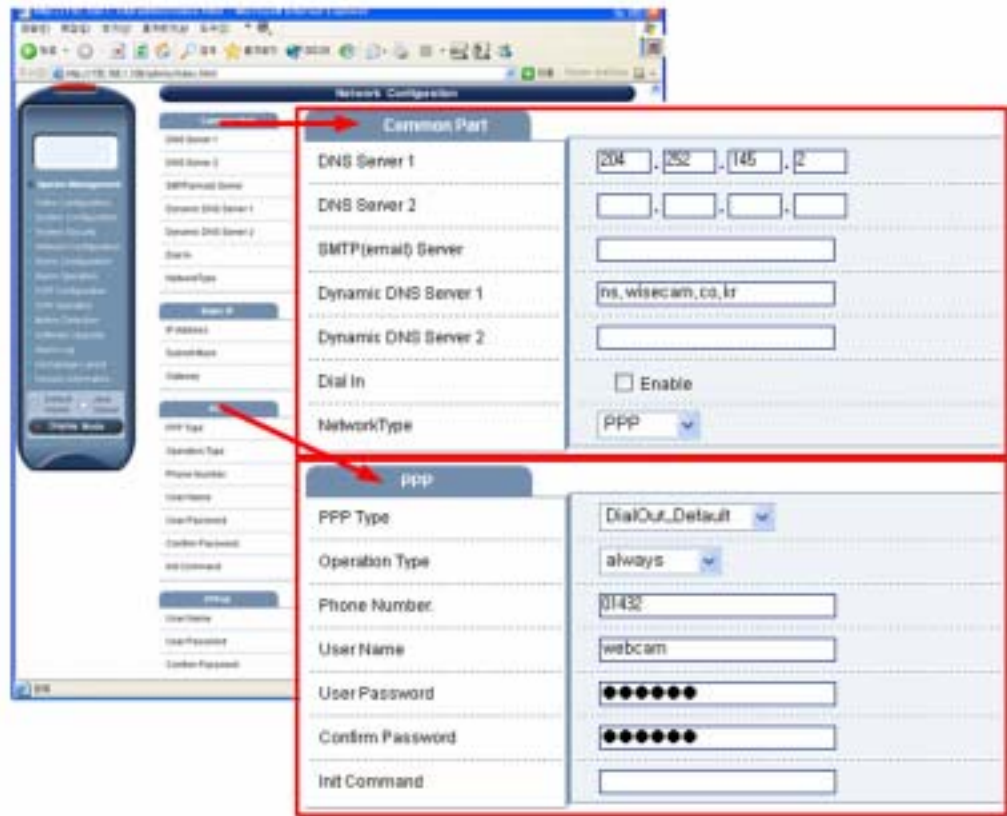


'System Configuration' 'Reboot', '가', (WAN) (LAN), (WAN), - CAM 1 : http://( IP ) : 8001, - CAM 2 : http://( IP ) : 8001, (LAN), - CAM 1 : http://( IP ) : 8001, - CAM 2 : http://( IP ) : 8001, ) IP

- PSTN

PSTN

'Admin Mode' , 'Network Configuration'



'Network Type' 'PPP'

'PPP' IP 'Dynamic DNS Server' DDNS

DDNS MAC  
 . (w\_\_\_\_.DDNS Sever )

DDNS  
 'Dynamic DNS Server' : ns.wisecam.co.kr

MAC : 00-30-ba-fe-40-12

Domain : wfe4012.wisecam.co.kr

'Dynamic DNS Server'

'DNS Server' 가

'PPP' 'Network Type' 'PPP'

'Operation

Type'

가 , 'System Configuration' , 'Save' , 'Reboot' , 'PPP' .



3.

1)

● FCC

FCC 15, Class B  
가

TV

가

/TV

●

가

가

가

가

( , , , )

, 가 가

●

가

가

가

UL listed wire VW-1, STYEL 1007

●

가

가

가

2)

●

●

●

●

가

●

가

●

4. A/S

1)

- 
- 
- 
- 

, , , ,  
,

가

가가

- 
- 

, ,



		CMOS NETWORK CAMERA
		1

2)

● A/S :

Tel. 0502-100-1180 / (82).0502.100.1180

Fax.02-3482-0993 / (82).2.3482.0993



:	
:	:
:	:
:	:
:	:
:	:
:	
:	
( )	( )
( )	